

Firmware Update CHB-C-N

The firmware for CHB-C-N will be updated by FFT Festo Field Device Tool. FFT Version 2.5.3.4xxx or higher.

This software is available on „Support Portal“ www.festo.com/sp

The FFT Festo Field Device Tool include all the available firmware files for the different Festo devices. Normally FFT will search on Festo server for latest firmware version.(Internet connection required)
 You can start the search process by clicking this Icon:



Remark:

If firmware file is not available on Support portal, it is possible to copy manually a firmware file, which may be delivered by Festo service, into the firmware repository.

The firmware must be available in „Firmware Repository“ of FFT software directory structure:

C:\ProgramData\Festo\FestoFieldDeviceTool\FirmwareRepository\CHB-C-N

3.6.1-chb-0-rev-f86328a0a483.chbf

14.09.2016 11:20

CHBF-Datei

Firmware Update CHB-C-N

Start the FFT software. Then the connected devices will be scanned. Do the following instructions:

The screenshot shows the Festo Field Device Tool interface. At the top, there is a menu bar with 'Actions', 'Extras', and 'Help'. Below it is a toolbar with various icons for device management. The main area is divided into a 'List view' and a 'Device properties' panel. The 'List view' contains a table with the following data:

Device name	IP Address	Device type	MAC	Firmware
Pool-System-SHI-2	192.168.2.20	CHB-C-N	00:0E:F0:50:B3:7F	3.6.3.0.17535 (ce3bc0dc41cb)

The 'Device properties' panel on the right shows details for the selected device, including Device name, Device type, Serial number, Product key, Part number, NOC, Firmware, DHCP status, IP Address, IP Netmask, Gateway, DNS, MAC, and Generic info.

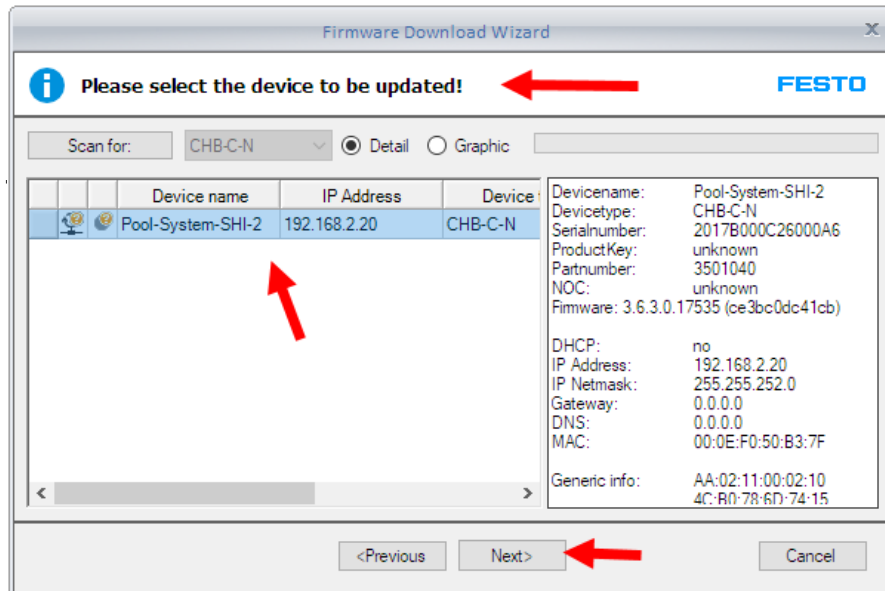
A 'Firmware Download Wizard' dialog box is open in the center, titled 'Please select the device type'. It features a 3D model of a device on the left and a list of device types on the right. The 'CHB-C-N' device type is selected in the list. The 'Next' button is highlighted with a red arrow.

Red annotations provide instructions:

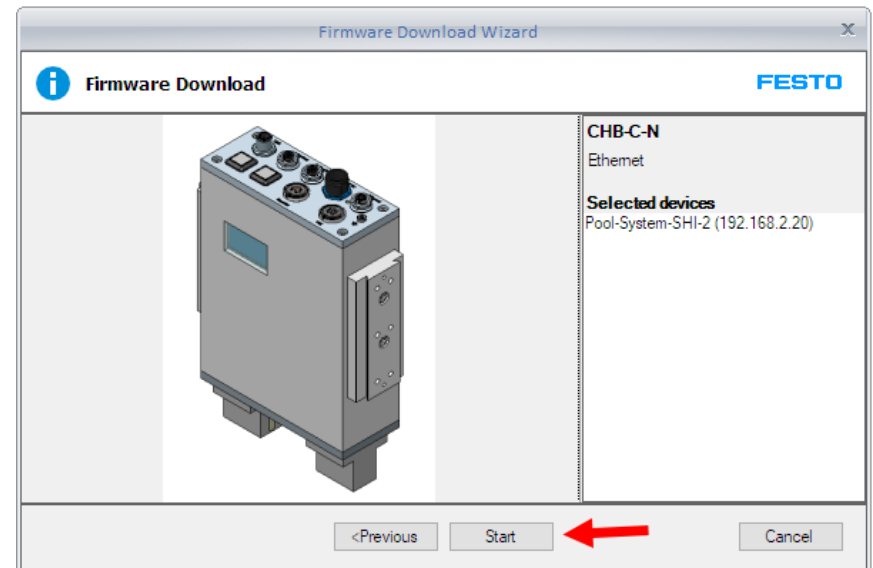
- A red box on the left contains the text: "1. Select the device" and "2. Tic on 'Firmware' Icon". Red arrows point from this box to the 'Firmware' icon in the toolbar and the selected device in the list view.
- A red box on the right contains the text: "Select the CHB-C-N". A red arrow points from this box to the 'CHB-C-N' entry in the device type list.
- A red arrow points to the 'Next' button in the wizard dialog.

Firmware Update CHB-C-N

Select the device:

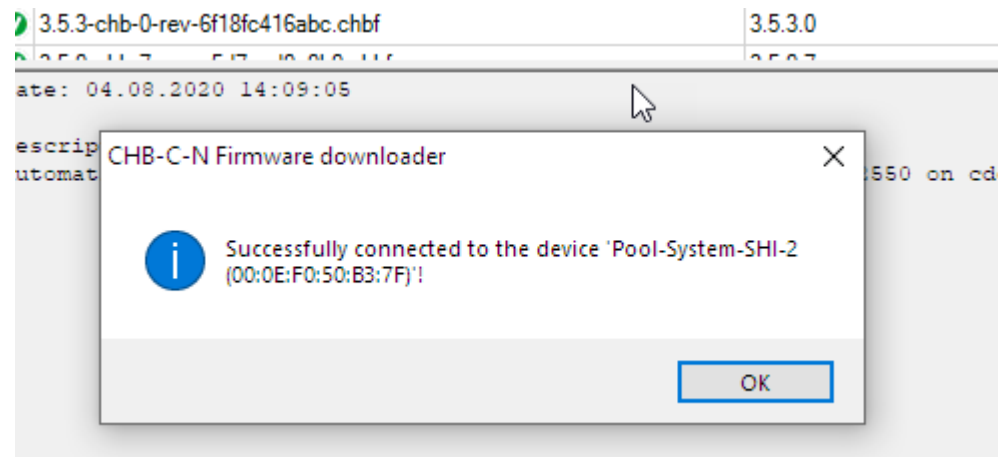
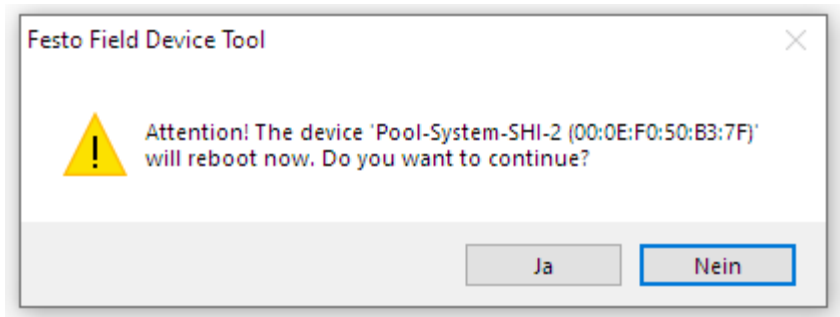


Tic Start:



Firmware Update CHB-C-N

The device will be rebooted and reconnected!



Firmware Update CHB-C-N

Then all in FFT available firmware files for this device were shown.

Select the demanded firmware for update.

Start with: Download firmware

The screenshot shows the 'CHB-C-N Firmware downloader' window. At the top, there is a table with columns: Device name, IP Address, Device type, MAC, and Firmware. Below this is a list of available firmware files with columns: Firmware file, Version, and Date. A red arrow points to the file '3.6.4-chb-0-rev-0f9102550.chbf'. At the bottom right, a red arrow points to the 'Download firmware' button.

Device name	IP Address	Device type	MAC	Firmware
Pool-System-SHI-2	192.168.2.20	CHB-C-N	00:0E:F0:50:B3:7F	3.6.3.0.17535 (ce3bc0dc41cb)

Firmware file	Version	Date
3.6.4-chb-0-rev-0f9102550.chbf	3.6.4.0	2020-08-04
3.6.1-chb-2-rev-227834f788af.chbf	3.6.1.2	2019-07-11
3.6.3-chb-0-rev-ce3bc0dc41cb.chbf	3.6.3.0	2019-07-11
3.6.1-chb-1-rev-44fbcf6e5d5a.chbf	3.6.1.1	2018-10-01
3.6.1-chb-1-rev-be38d40fe34b-modified.chbf	3.6.1.1	2018-10-01
Testversion ActuatorAssignmentMode Version 'Goodparts' 3.6.2-ch...	3.6.2.0	2017-06-12
3.6.1-chb-0-rev-f86328a0a483.chbf	3.6.1.0	2016-09-14
3.6.0-chb-0-rev-8afb3ef79bbd.chbf	3.6.0.0	2016-08-15
3.5.3-chb-0-rev-6f18fc416abc.chbf	3.5.3.0	2016-04-19

Date: 04.08.2020 14:09:05

Description:
Automatically generated firmware version 3.6.4 Revision 0f9102550 on cde65292

State: Connected with the device! 0%

Progress: 0%

Buttons: Browse ... Download firmware

Firmware Update CHB-C-N

After some minutes the fw is updated completely. > OK

	3.6.1-chb-0-rev-18b328a0a483.chbt	3.6.1.0	2016-09-14
	3.6.0-chb-0-rev-8afb3ef79bbd.chbf	3.6.0.0	2016-08-15
	3.5.3-chb-0-rev-6f18fc41fcb2.chbf	3.5.3.0	2016-04-19
	3.5.0-1.7-5.17-1		2015-10-10

Date: 04.08.2020 14:...

Description:
Automatically generat...

CHB-C-N Firmware downloader ✕

Successfully downloaded the firmware to the device 'Pool-System-SHI-2 (00:0E:F0:50:B3:7F)' - device reboots automatically!

State: 100%

Progress: 100%


Firmware Update CHB-C-N

After the download, a protocol is generated, which is shown as html in a browser.

Festo Field Device Tool V2.10.2.36790

Line sensor camera

Device information	
Date	04.02.2021
Product family	CHB-C-N
Product	CHB-C-N
Part number	3501040
Identcode	-
Serial number	2017B000C26000A6



Update protocol	
Firmware	3.6.4-chb-0-rev-0f9102550.chbf
State	✓
Previous version	3.6.3.0.17535 (ce3bc0dc41cb)
Current version	3.6.4.0
DisableFirmwareCheck	No
Error	

Information:

After the successful firmware-update the protocol must be added to your machine documentation.

Please also update the Festo manuals over the Festo support portal.

http://www.festo.com/net/de_de/SupportPortal/