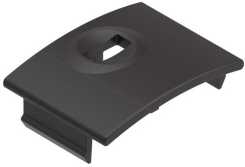


## Dop obturare VAMC-B10-20-CH2

Numar piesa: 8028240

FESTO



### Fisa de date

| Caracteristica                       | Valoare                                      |
|--------------------------------------|--|
| Clasa de rezistenta la coroziune KBK | 2 - Solicitare moderata din cauza coroziunii |
| Conformitatea LABS                   | VDMA24364-B1/B2-L                            |
| Greutate produs                      | 0.32 g                                       |
| Material dop de obturare             | POM  |