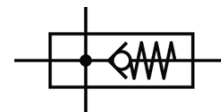
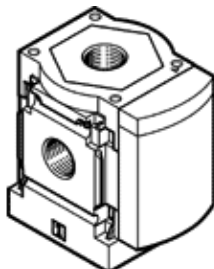


# Modul de ramificare MS6-FRM-3/8-I-Z

Cod: 536973

FESTO

cu functiune de supapa integrata, directie debitului de tranzit de la dreapta la stanga.



## Fisa tehnica

Caracteristica	valoare
pozitie instalare	oricare
structura constructiva	modul de ramificatie cu supapa de sens unic
presiune de operare	0 ... 20 bar
debit standard in directia principala de curgere 1->2	5.500 l/min
debit standard la iesirea superioara	2.900 l/min
debit standard la iesirea inferioara	3.200 l/min
mediu de operare	Compressed air in accordance with ISO8573-1:2010 [7:4:4] Inert gases
Note on operating and pilot medium	Lubricated operation possible (subsequently required for further operation)
clasa de rezistenta la coroziune KBK	2
temperatura de depozitare	-10 ... 60 °C
temperatura mediului	-10 ... 60 °C
greutate produs	400 g
racord pneumatic 1	G3/8
racord pneumatic 2	G3/8
racord pneumatic 3	G1/2
racord pneumatic 4	G1/2
indicatie material	conform RoHS
informatii referitoare la material pentru carcasa	aluminiu turnat sub presiune