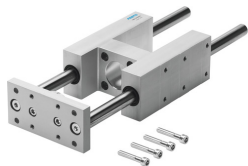


Unitate ghidare FENG-100-500-KF

Numar piesa: 34536

FESTO



Fisa de date

| Caracteristica | Valoare |
|-----------------------------|--|
| Dimensiune | 100 |
| Cursa | 500 mm |
| Pozitie de instalare | orice |
| Ghidaj | Ghidaj cu bile de recirculare |
| Structura constructiva | Ghidaj |
| Protectie la explozie | Zona 1 (ATEX) Zona 2 (ATEX) Zona 21 (ATEX) Zona 22 (ATEX) |
| Conformitatea LABS | VDMA24364-B2-L |
| Temperatura ambianta | -20 °C...80 °C |
| Forta max. Fy | 2300 N |
| Forta max. Fy statica | 3120 N |
| Forta max. Fz | 2300 N |
| Forta max. Fz statica | 3120 N |
| Moment max. Mx | 198 Nm |
| Moment max. Mx static | 268 Nm |
| Max. Moment My | 197 Nm |
| Moment My static max. | 267 Nm |
| Moment max. Mz | 197 Nm |
| Moment Mz static max. | 267 Nm |
| Forta de deplasare | 40 N |
| Greutate produs | 16840 g |
| Tipul de montare | cu filet interior |
| Nota privind materialele | Conform RoHS |
| Material element de ghidare | Otel calit |
| Material carcasa | Aliaj de aluminiu forjat, anodizat |
| Material placa de jug | Otel calit |