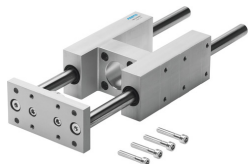


Unitate ghidare FENG-32-200-KF

Numar piesa: 34496

FESTO



Fisa de date

| Caracteristica | Valoare |
|-----------------------------|--|
| Dimensiune | 32 |
| Cursa | 200 mm |
| Pozitie de instalare | orice |
| Ghidaj | Ghidaj cu bile de recirculare |
| Structura constructiva | Ghidaj |
| Protectie la explozie | Zona 1 (ATEX) Zona 2 (ATEX) Zona 21 (ATEX) Zona 22 (ATEX) |
| Conformitatea LABS | VDMA24364-B2-L |
| Temperatura ambianta | -20 °C...80 °C |
| Forta max. Fy | 750 N |
| Forta max. Fy statica | 1020 N |
| Forta max. Fz | 750 N |
| Forta max. Fz statica | 1020 N |
| Moment max. Mx | 28 Nm |
| Moment max. Mx static | 38 Nm |
| Max. Moment My | 34 Nm |
| Moment My static max. | 46 Nm |
| Moment max. Mz | 34 Nm |
| Moment Mz static max. | 46 Nm |
| Forta de deplasare | 15 N |
| Greutate produs | 1890 g |
| Tipul de montare | cu filet interior |
| Nota privind materialele | Conform RoHS |
| Material element de ghidare | Otel calit |
| Material carcasa | Aliaj de aluminiu forjat, anodizat |
| Material placa de jug | Aliaj de aluminiu forjat, anodizat |