

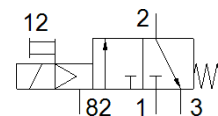
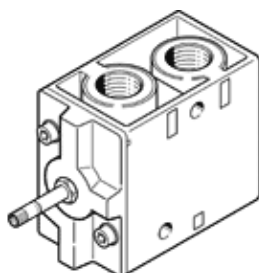
# Solenoid valve

## MFH-3-1/2

Part number: 9857

FESTO

With manual override, without solenoid coil or socket. Solenoid coil and socket should be ordered separately.



## Data sheet

| Feature                                 | Value   |
|---|---|
| Valve function                          | 3/2 closed, monostable  |
| Type of actuation                       | electrical  |
| Width                                   | 52 mm   |
| Standard nominal flow rate              | 3,700 l/min   |
| Operating pressure MPa                  | 0.15 ... 0.8 MPa  |
| Working pressure                        | 1.5 ... 8 bar   |
| Design structure                        | Poppet seat   |
| Type of reset                           | mechanical spring   |
| Authorization                           | c UL us - Recognized (OL)   |
| Protection class                        | IP65  |
| Nominal size                            | 14 mm   |
| Grid dimension                          | 69 mm   |
| Exhaust-air function                    | throttleable  |
| Sealing principle                       | soft  |
| Assembly position                       | Any   |
| Manual override                         | detenting   |
| Type of piloting                        | Piloted   |
| Flow direction                          | non reversible  |
| Lap                                     | Underlap  |
| b value                                 | 0.3   |
| Switching time off                      | 90 ms   |
| Switching time on                       | 18 ms   |
| Max. positive test pulse with logic 0   | 2,200 µs  |
| Max. negative test pulse with logic 1   | 3,700 µs  |
| Characteristic coil data                | See solenoid coil, to be ordered separately                                 |
| Operating medium                        | Compressed air in accordance with ISO8573-1:2010 [7:4:4]                    |
| Note on operating and pilot medium      | Lubricated operation possible (subsequently required for further operation) |
| Corrosion resistance classification CRC | 1 - Low corrosion stress  |
| PWIS conformity                         | VDMA24364-B1/B2-L   |
| Storage temperature                     | -20 ... 60 °C   |
| Medium temperature                      | -10 ... 60 °C   |
| Ambient temperature                     | -5 ... 40 °C  |
| Product weight                          | 1,100 g   |
| Electrical connection                   | Via F coil, must be ordered separately                                      |
| Mounting type                           | on manifold rail<br>with through hole<br>Optional                           |
| Pilot exhaust port 82                   | M5  |
| Pneumatic connection, port 1            | G1/2  |
| Pneumatic connection, port 2            | G1/2  |
| Pneumatic connection, port 3            | G1/2  |
| Materials note                          | Conforms to RoHS  |
| Material seals                          | NBR   |
| Material housing                        | Aluminum die cast   |