

# Hand lever valve

## HSO-4/3-1/4

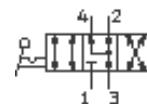
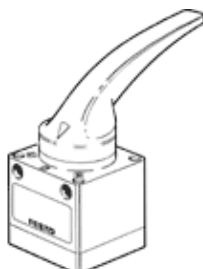
Part number: 9340

FESTO

4/3-way valve with hand lever, open in mid position.

Discontinued, available through 2006

This type is suitable for vacuum operation. Vacuum connections to 1 (P) and 3 (R).



### Data sheet

Feature	Value
Standard nominal flow rate	1,200 l/min
Pneumatic connection, port 2	G1 1/4
Pneumatic connection, port 4	G1 1/4
Operating pressure	-0.95 ... 10 bar
Design structure	Rotary slide valve
Nominal size	8 mm
Ambient temperature	-20 ... 80 °C
Actuating force	12 N
Product weight	0.39 kg
Mounting type	with through hole
Pneumatic connection, port 1	G1 1/4
Pneumatic connection, port 3	G1 1/4
Materials note	Contains PWIS substances
Materials information for seals	NBR
Materials information, housing	Aluminium die cast