

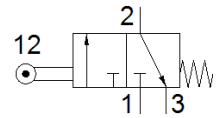
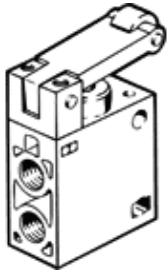
# Roller lever valve

## R-3-1/4-B

Part number: 8985

FESTO

This type is suitable for vacuum.



## Data sheet

| Feature                      | Value                  |
|------------------------------|------------------------|
| Valve function               | 3/2 closed, monostable |
| Type of actuation            | mechanical             |
| Standard nominal flow rate   | 600 l/min              |
| Working pressure             | -0.95 ... 10 bar       |
| Design structure             | Piston seat            |
| Nominal size                 | 7 mm                   |
| Type of piloting             | direct                 |
| PWIS conformity              | VDMA24364-B1/B2-L      |
| Ambient temperature          | -10 ... 60 °C          |
| Actuating force              | 26 N                   |
| Product weight               | 230 g                  |
| Mounting type                | with through hole      |
| Pneumatic connection, port 1 | G1/4                   |
| Pneumatic connection, port 2 | G1/4                   |
| Pneumatic connection, port 3 | G1/4                   |
| Material seals               | NBR                    |
| Material housing             | Aluminum die cast      |