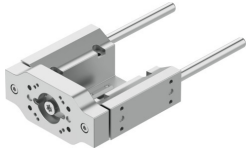


# Guide unit EAGF-P2-KF-60-

Part number: 8158150

FESTO



## Data sheet

Feature	Value
Size	60
Stroke	1 mm...500 mm
Reversing backlash	0 $\mu$ m
Mounting position	Any
Guide	Recirculating ball bearing guide
Structural design	Guide
Max. acceleration	25 m/s <sup>2</sup>
Max. speed	1 m/s
Corrosion resistance class (CRC)	0 - No corrosion stress
LABS (PWIS) conformity	VDMA24364 zone III
Degree of protection	IP40
Ambient temperature	0 °C...60 °C
Max. force F <sub>y</sub>	380 N
Max. force F <sub>y</sub> static	510 N
Max. force F <sub>z</sub>	380 N
Max. force F <sub>z</sub> static	510 N
Max. torque M <sub>x</sub>	20 Nm
Max. static moment M <sub>x</sub>	27 Nm
Max. torque M <sub>y</sub>	15 Nm
Max. static moment M <sub>y</sub>	20 Nm
Max. torque M <sub>z</sub>	15 Nm
Max. static moment M <sub>z</sub>	20 Nm
Displacement force	3 N
Moving mass at 0 mm stroke	583 g
Basic weight with 0 mm stroke	1614 g
Additional weight per 10 mm stroke	17.8 g
Additional moving mass per 10 mm stroke	17.8 g
Center of gravity of moving mass with 0 mm stroke	31 mm
Center of gravity of moving mass with 10 mm stroke	4.3 mm
Type of mounting	With internal thread
Note on materials	RoHS-compliant

<b>Feature</b>	<b>Value</b>
Material of guide component	Tempered steel Hard-chrome-plated
Housing material	Wrought aluminum alloy Anodized
Material of yoke plate	Wrought aluminum alloy Anodized