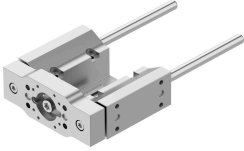


# Guide unit EAGF-P2-KF-45-50

Part number: 8158131

FESTO



## Data sheet

Feature	Value
Size	45
Stroke	50 mm
Reversing backlash	0 $\mu$ m
Mounting position	Any
Guide	Recirculating ball bearing guide
Structural design	Guide
Max. acceleration	25 m/s <sup>2</sup>
Max. speed	1 m/s
Corrosion resistance class (CRC)	0 - No corrosion stress
LABS (PWIS) conformity	VDMA24364 zone III
Degree of protection	IP40
Ambient temperature	0 °C...60 °C
Max. force Fy	320 N
Max. force Fy static	415 N
Max. force Fz	320 N
Max. force Fz static	415 N
Max. torque Mx	15 Nm
Max. static moment Mx	19 Nm
Max. torque My	10 Nm
Max. static moment My	12 Nm
Max. torque Mz	10 Nm
Max. static moment Mz	12 Nm
Displacement force	2 N
Moving mass at 0 mm stroke	342 g
Basic weight with 0 mm stroke	1037 g
Additional weight per 10 mm stroke	12.3 g
Additional moving mass per 10 mm stroke	12.3 g
Center of gravity of moving mass with 0 mm stroke	25 mm
Center of gravity of moving mass with 10 mm stroke	4.3 mm
Type of mounting	With internal thread
Note on materials	RoHS-compliant

<b>Feature</b>	<b>Value</b>
Material of guide component	Tempered steel Hard-chrome-plated
Housing material	Wrought aluminum alloy Anodized
Material of yoke plate	Wrought aluminum alloy Anodized