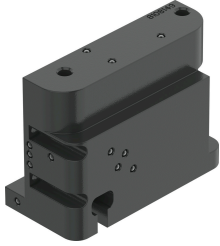


# Connection block CAPS-M1-VDE2-D-A-AL-N14

Part number: 8154594

FESTO



## Data sheet

Feature	Value
Dimensions W x L x H	80 mm x 104 mm x 50 mm
Mode of operation	Double-acting
Design features	Safety pneumatic output 2 exhausted Safety pneumatic output 4 pressurized
Standard nominal flow rate	270 l/min
LABS (PWIS) conformity	VDMA24364 zone III
Product weight	650 g
Type of mounting	to VDI/VDE 3847-2
Pneumatic connection	1/4 NPT
Note on materials	RoHS-compliant
Material of screws	High-alloy stainless steel
Housing material	Aluminum, powder-coated