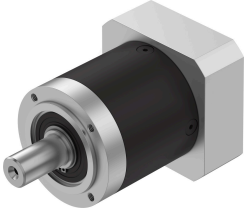


Gear unit EMGA-80-P-G12-SST-87

Part number: 8141767

FESTO



Data sheet

Feature	Value
Gearbox flange size	80 mm
Motor flange size	87 mm
Torsional backlash	0.15 deg
Gearbox type	Planetary gear
Gear ratio	12:1
Max. actuator speed	7000 1/min
Gearbox operating temperature	-25 °C...90 °C
LABS (PWIS) conformity	VDMA24364-B2-L
Degree of protection	IP54
Continuous output torque	120 Nm
Mass moment of inertia, gearbox	0.589 kgcm ²
Max. output torque	192 Nm
Max. efficiency	97 %
Torsional rigidity	10.4 Nm/arcmin
Product weight	2600 g
Gearbox interface, output shaft	80G
Gearbox interface, actuator	87A
Note on materials	RoHS-compliant