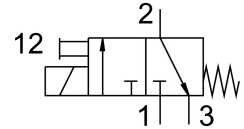
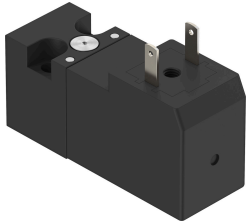


# Solenoid valve VSCS-B-M32-MD-WA-1E1-8

Part number: 8137328

FESTO



## Data sheet

| Feature                                  | Value  |
|--|--|
| Valve function                           | 3/2, closed, monostable  |
| Actuation type                           | Electrical   |
| Width                                    | 15 mm  |
| Standard nominal flow rate               | 13.5 l/min   |
| Pneumatic working port                   | Sub-base, size 15 mm according to ISO 15218  |
| Operating voltage                        | 24V DC   |
| Operating pressure                       | 0.15 MPa...0.8 MPa<br>1.5 bar...8 bar<br>21.75 psi...116 psi                         |
| Reset method                             | Mechanical spring  |
| Degree of protection                     | IP65   |
| Sealing principle                        | Soft   |
| Mounting position                        | Any  |
| Conforms to standard                     | ISO 15218  |
| Manual override                          | Detenting<br>Non-detenting   |
| Type of control                          | Direct   |
| Flow direction                           | Non-reversible   |
| Lap                                      | Underlap   |
| Note on forced dynamization              | Switching frequency at least once a week   |
| Switching time off                       | 6 ms   |
| On switching time                        | 8 ms   |
| Duty cycle                               | 100%   |
| Coil characteristics                     | 24 V DC: 1.3 W   |
| Permissible voltage fluctuations         | +/- 10 %   |
| Operating medium                         | Compressed air as per ISO 8573-1:2010 [7:4:4]  |
| Information on operating and pilot media | Operation with oil lubrication possible (required for further use)                   |
| Vibration resistance                     | Transport application test with severity level 1 as per FN 942017-4 and EN 60068-2-6 |
| Shock resistance                         | Shock test with severity level 1 as per FN 942017-5 and EN 60068-2-27                |
| Corrosion resistance class (CRC)         | 2 - Moderate corrosion stress  |
| LABS (PWIS) conformity                   | VDMA24364-C1-L   |

| <b>Feature</b>         | <b>Value</b>   |
|------------------------|--|
| Temperature of medium  | -5 °C...50 °C  |
| Ambient temperature    | -5 °C...50 °C  |
| Electrical connection  | Connection diagram form C as per industrial standard, 9.4 mm |
| Pneumatic connection 1 | Sub-base   |
| Pneumatic connection 2 | Sub-base   |
| Pneumatic connection 3 | Sub-base   |
| Note on materials      | RoHS-compliant   |
| Seals material         | NBR  |