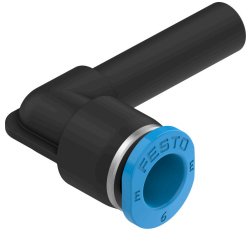


Push-in L-connector NPQE-L-Q6-S6-P10

Part number: 8113196

FESTO



Data sheet

Feature	Value
Size	Mini
Nominal width	4 mm
Mounting position	Any
Design	L-shape
Pack size	10
Structural design	Push-pull principle
Operating pressure for entire temperature range	-0.095 MPa...0.8 MPa -0.95 bar...8 bar -13.775 psi...116 psi
Operating medium	Compressed air as per ISO 8573-1:2010 [7:4:4]
Information on operating and pilot media	Operation with oil lubrication possible
Corrosion resistance class (CRC)	1 - Low corrosion stress
LABS (PWIS) conformity	VDMA24364 zone III
Cleanroom class	Class 4 according to ISO 14644-1
Ambient temperature	-5 °C...60 °C
Product weight	2.43 g
Pneumatic connection 1	For pneumatic tubing outside diameter 6 mm
Pneumatic connection 2	Push-in sleeve Ø 6 mm
Releasing ring color	Blue
Note on materials	RoHS-compliant
Housing material	PBT
Releasing ring material	POM
Material of tubing seal	NBR
Material of tube retaining claw	Stainless steel