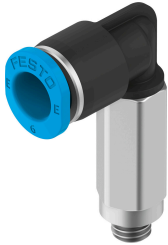


Push-in L-fitting, long NPQE-LL-M5-Q6-P10

Part number: 8113013

FESTO



Data sheet

Feature	Value
Size	Mini
Nominal width	2.3 mm
Type of seal on screwed plug	Sealing ring
Mounting position	Any
Design	L-shape, long
Pack size	10
Structural design	Push-pull principle
Operating pressure for entire temperature range	-0.095 MPa...0.8 MPa -0.95 bar...8 bar -13.775 psi...116 psi
Operating medium	Compressed air as per ISO 8573-1:2010 [7:4:4]
Information on operating and pilot media	Operation with oil lubrication possible
Corrosion resistance class (CRC)	1 - Low corrosion stress
LABS (PWIS) conformity	VDMA24364 zone III
Cleanroom class	Class 4 according to ISO 14644-1
Ambient temperature	-5 °C...60 °C
Nominal tightening torque	0.8 Nm
Tolerance for nominal tightening torque	± 5 %
Product weight	9.34 g
Type of mounting	External hexagon, AF 8
Pneumatic connection 1	External thread M5
Pneumatic connection 2	for pneumatic tubing outside diameter 6 mm
Releasing ring color	Blue
Note on materials	RoHS-compliant
Housing material	Brass, nickel-plated PBT
Material of threaded seal	NBR
Releasing ring material	POM
O-ring material	NBR
Material of tubing seal	NBR
Material of tube retaining claw	Stainless steel