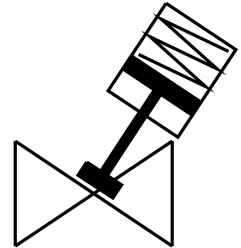


# Angle seat valve VZXA-A-TS7-3/4"-M6-B1T-16-K-75-20-PR-PM

Part number: 8111599

FESTO



## Data sheet

Feature	Value
Structural design	Poppet valve with piston actuator
Actuation type	Pneumatic
Mounting position	Any
Type of mounting	Line installation
Cable connection	Threaded sleeve 3/4 NPT as per ANSI/ASME B 1.20.1
Valve function	2/2
Flow direction	Non-reversible Above valve seat, for gaseous media
Medium pressure	0 MPa...1.6 MPa 0 bar...16 bar
Reset method	Mechanical spring
Type of control	Externally controlled
Pneumatic connection	Internal thread G1/8
Operating pressure	0.5 MPa...0.7 MPa 5 bar...7 bar 72.5 psi...101.5 psi
Medium	Vapor Inert gas Filtered compressed air, 200 µm filter mesh
Control of the medium	On/off mode
Operating medium	Compressed air as per ISO 8573-1:2010 [7:4:4]
Max. viscosity	600 mm <sup>2</sup> /s
Temperature of medium	-10 °C...60 °C
Ambient temperature	0 °C...60 °C
Flow rate Kv	12.7 m <sup>3</sup> /h
Use in exterior area	Weather-protected locations class C1 based on IEC 60654-1
Note on materials	RoHS-compliant
LABS (PWIS) conformity	VDMA24364 zone III
Valve housing material	Brass
Material number, fitting housing	CW724R
Seals material	FPM

<b>Feature</b>	<b>Value</b>
Spindle seal material	PTFE
Seat seal material	PTFE
Product weight	2321 g
Actuator size	75 mm
Stroke	20 mm
Control function	Closed by reduced spring force, NC
Position sensing	With mechanical indicator
Drive housing material	PA-reinforced
Storage temperature	-10 °C...60 °C
Degree of protection	IP65 IP67
Piston rod material	High-alloy stainless steel
Cover material	PA-reinforced