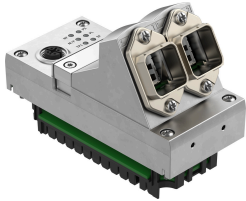


Interface CPX-M-FB44

Part number: 8110370

FESTO



Data sheet

Feature	Value
Protocol	PROFINET IRT PROFINET RT
Dimensions W x L x H	(incl. interlinking block) 50 mm x 107 mm x 80 mm
Product weight	280 g
Ambient temperature	-5 °C...50 °C
Storage temperature	-20 °C...70 °C
Degree of protection	IP65 IP67
Corrosion resistance class (CRC)	0 - No corrosion stress
LABS (PWIS) conformity	VDMA24364-B2-L
Certification	RCM compliance mark
Note on materials	RoHS-compliant
Housing material	Die-cast aluminum
LED display (product-specific)	M: Modify, parameterization PL: load supply PS: electronics supply, sensor supply SF: system fault
LED display (bus-specific)	M/P: maintenance/PROFInergy NF: network fault TP1: network active port 1 TP2: network active, port 2
Device-specific diagnostics	Channel-oriented and module-oriented diagnostics Undervoltage of modules Diagnostic memory
Control elements	DIL switch
Fieldbus interface	2x RJ45 push-pull socket, AIDA
Max. address capacity inputs	64 byte
Max. address capacity outputs	64 byte
Parameterization	Diagnostic behavior Fail-safe response forcing of channels Signal setup System parameter
Baud rate	100 Mbit/s
Configuration support	GSDML file

Feature	Value
Additional functions	Acyclic data access via fieldbus Acyclic data access via Ethernet Fast start-up (FSU) I&M Channel-based diagnostics via fieldbus LLDP MQTT MRP MRPD PROFIenergy PROFI-safe S2 system redundancy Start-up parameterization in plain text via fieldbus System status can be indicated via process data Additional diagnostic interface for operator units
DC operating voltage range	18 V...30 V
Nominal operating voltage DC	24 V
Intrinsic current consumption at nominal operating voltage	Typ. 70 mA