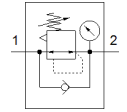
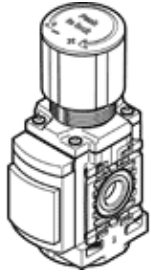


Pressure regulator MS4-LR-1/4-D6-AG-BAR-B

Part number: 8099358

★ Core product range

FESTO



Data sheet

Feature	Value
Size	4
Series	MS
Actuator lock	Rotary knob with lock
Assembly position	Any
Design structure	Pressure regulator with gauge directly-controlled piston regulator
Controller function	Output pressure constant with secondary exhaust with return flow
Unit(s) that can be displayed	bar psi
Pressure gauge	with pressure gauge
Operating pressure MPa	0.1 ... 1 MPa
Working pressure	1 ... 10 bar
Pressure regulation range	0.3 ... 7 bar
Max. pressure hysteresis (MPa)	0.05 MPa
Max. pressure hysteresis	0.5 bar 7.25 psi
Standard nominal flow rate	1,800 l/min
Operating medium	Compressed air in accordance with ISO8573-1:2010 [7:4:4] Inert gases
Note on operating and pilot medium	Lubricated operation possible (subsequently required for further operation)
Corrosion resistance classification CRC	1 - Low corrosion stress
PWIS conformity	VDMA24364-B1/B2-L
Cleanroom class	ISO class 7
Storage temperature	-5 ... 50 °C
Medium temperature	-5 ... 50 °C
Ambient temperature	-5 ... 50 °C
Product weight	165 g
Mounting type	Front panel installation Line installation with accessories Optional
Pneumatic connection, port 1	G1/4
Pneumatic connection, port 2	G1/4
Materials note	Conforms to RoHS
Material underneath cover	PA
Material seals	NBR
Material rotary knob	POM
Material spring	High alloy steel Galvanized steel
Material housing	PA-reinforced
Material valve stem	POM