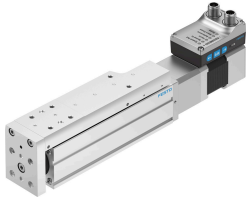


Mini slide unit EGSS-BS-KF-45-100-10P-ST-M-H1-PLK-AA

Part number: 8083817

FESTO



Data sheet

Feature	Value
Working stroke	100 mm
Size	45
Stroke reserve	0 mm
Screw diameter	10 mm
Spindle pitch	10 mm/U
Mounting position	Any
Guide	Recirculating ball bearing guide
Structural design	Electrical mini-slide with ball screw drive With integrated drive
Spindle type	Ball screw drive
Position sensing	Motor encoder For proximity sensor
Rotor position sensor	Absolute encoder, single-turn
Rotor position sensor measuring principle	Magnetic
Additional functions	User interface Integrated end-position sensing
Display	LED
Max. acceleration	5 m/s ²
Max. speed	0.25 m/s
Repetition accuracy	±0.015 mm
Characteristics of digital logic outputs	Configurable Not galvanically isolated
Duty cycle	100%
Insulation protection class	B
Max. current of digital logic outputs	100 mA
Max. current consumption	3 A
Logic max. current consumption	300 mA
DC nominal voltage	24 V
Nominal current	3 A
Parameterization interface	IO-Link® User interface
Permissible voltage fluctuations	+/- 15 %

Feature	Value
Power supply, type of connection	Plug
Power supply, connection technology	M12x1, T-coded as per EN 61076-2-111
Power supply, number of pins/wires	4
Certification	RCM compliance mark
CE marking (see declaration of conformity)	As per EU EMC directive As per EU RoHS directive
Corrosion resistance class (CRC)	0 - No corrosion stress
LABS (PWIS) conformity	VDMA24364 zone III
Storage temperature	-20 °C...60 °C
Relative air humidity	0 - 90 %
Degree of protection	IP40
Ambient temperature	0 °C...50 °C
Note on ambient temperature	Above an ambient temperature of 30°C, the power must be reduced by 2% per K.
Max. force Fy	1314 N
Max. force Fz	1314 N
Fy with theoretical service life of 100 km (from a guide perspective only)	3240 N
Fz with theoretical service life of 100 km (from a guide perspective only)	3240 N
Max. torque Mx	8.14 Nm
Max. torque My	7.05 Nm
Max. torque Mz	7.05 Nm
Mx with theoretical service life of 100 km (from a guide perspective only)	20 Nm
My with theoretical service life of 100 km (from a guide perspective only)	17 Nm
Mz with theoretical service life of 100 km (from a guide perspective only)	17 Nm
Max. radial force on actuator shaft	340 N
Max. feed force Fx	120 N
Guide value for payload, horizontal	6 kg
Guide value for payload, vertical	6 kg
Feed constant	10 mm/U
Reference service life	5000 km
Moving mass at 0 mm stroke	212 g
Additional moving mass per 10 mm stroke	30 g
Product weight	1867 g
Basic weight with 0 mm stroke	1238 g
Additional weight per 10 mm stroke	63 g
Number of digital logic outputs 24 V DC	2
Number of digital logic inputs	2
Work range of logic input	24 V
Characteristics of logic input	Configurable Not galvanically isolated
IO-Link®, process data content OUT	1 bit (move in) 1 bit (move out) 1 bit (quit error) 1 bit (move intermediate)
IO-Link®, process data content IN	1 bit (state device) 1 bit (State Intermediate) 1 bit (state move) 1 bit (state in) 1 bit (state out)
IO-Link®, service data contents IN	32 bit force 32 bit position 32 bit speed
IO-Link®, data memory required	0,5 kB
Input switching logic	PNP (positive switching)
Logic interface, connection type	Plug

Feature	Value
Logic interface, connection technology	M12x1, A-coded as per EN 61076-2-101
Logic interface, number of poles/wires	8
Type of mounting	With internal thread With centering sleeve With accessories With cylindrical pin
Note on materials	RoHS-compliant
Slide carriage material	Roller bearing steel
Guide rail material	Roller bearing steel
Spindle material	Roller bearing steel