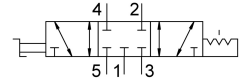


Selector valve VHEF-E-B53C-N14

Part number: 8080977

FESTO



Data sheet

| Feature | Value |
|--|--|
| Valve function | 5/3, closed |
| Actuation type | Manual |
| Width | 20 mm |
| Standard nominal flow rate | 1200 l/min |
| Pneumatic working port | 1/4 NPT |
| Operating pressure | -0.095 MPa...1 MPa -0.95 bar...10 bar |
| Structural design | Piston gate valve |
| Nominal width | 7 mm |
| Exhaust air function | With flow control option |
| Application note | Operate by hand only |
| Sealing principle | Soft |
| Mounting position | Any |
| Manual override | Detenting |
| Type of control | Direct |
| Flow direction | Reversible |
| Lap | Overlap |
| Max. switching frequency | 0.5 Hz |
| Explosion prevention and protection | Zone 1 (ATEX) Zone 2 (ATEX) Zone 21 (ATEX) Zone 22 (ATEX) |
| Operating medium | Compressed air as per ISO 8573-1:2010 [7:-:-] |
| Information on operating and pilot media | Operation with oil lubrication possible (required for further use) |
| Corrosion resistance class (CRC) | 1 - Low corrosion stress |
| LABS (PWIS) conformity | VDMA24364-B1/B2-L |
| Temperature of medium | -10 °C...60 °C |
| Ambient temperature | -10 °C...60 °C |
| Actuating torque | 0.4 Nm |
| Unlocking torque | 0.4 Nm |
| Max. force on actuator | 200 N |
| Max. transverse load on actuator | 200 N |

| Feature | Value |
|------------------------|--|
| Product weight | 268 g |
| Type of mounting | Optionally: Front panel mounting With through-hole |
| Pneumatic connection 1 | 1/4 NPT |
| Pneumatic connection 2 | 1/4 NPT |
| Pneumatic connection 3 | 1/4 NPT |
| Pneumatic connection 4 | 1/4 NPT |
| Pneumatic connection 5 | 1/4 NPT |
| Note on materials | RoHS-compliant |
| Cover material | PA-reinforced |
| Seals material | NBR |
| Housing material | Wrought aluminum alloy, anodized |
| Lever material | PA-reinforced |