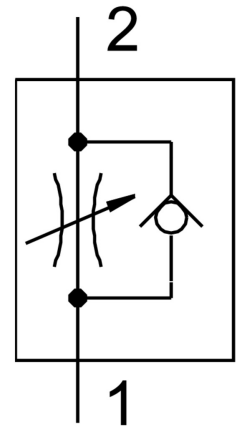


One-way flow control valve VFOE-LS-T-M7-Q6

Part number: 8068746

FESTO



Data sheet

Feature	Value
Valve function	Supply air flow control non-return function
Pneumatic connection 1	QS-6
Pneumatic connection 2	M7
Actuation type	Manual
Adjusting element	Rotary knob with detent
Type of mounting	Screw-in
Standard nominal flow rate in flow control direction	100 l/min
Standard nominal flow rate in non-return direction	60 l/min...100 l/min
Ambient temperature	-10 °C...60 °C
Housing material	PBT
Mounting position	Any
Width across flats	9 mm
Rotatability	360 deg/continuous swiveling not permissible
Operating pressure for entire temperature range	0.02 MPa...1 MPa 0.2 bar...10 bar 2.9 psi...145 psi
Standard flow rate in flow control direction 6 → 0 bar	165 l/min
Standard flow rate in non-return direction at 6 → 0 bar	150 l/min...180 l/min
Operating medium	Compressed air as per ISO 8573-1:2010 [7:4:4]
Information on operating and pilot media	Operation with oil lubrication possible (required for further use)
LABS (PWIS) conformity	VDMA24364 zone III
Cleanroom class	Class 4 according to ISO 14644-1
Temperature of medium	-10 °C...60 °C
Max. tightening torque	3.6 Nm
Nominal tightening torque	3 Nm

Feature	Value
Tolerance for nominal tightening torque	± 20%
Product weight	4 g
Note on materials	RoHS-compliant
Cover material	PBT
Material of dynamic seals	HNBR
Threaded bolt material	Steel, galvanized
Releasing ring material	PBT
Static seal material	NBR