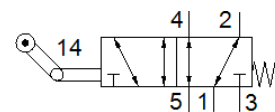
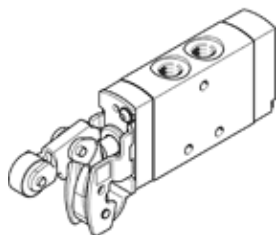


Roller lever valve VMEF-K-M52-M-N18

Part number: 8047104

FESTO



Data sheet

Feature	Value
Valve function	5/2 monostable
Type of actuation	mechanical
Width	20 mm
Standard nominal flow rate	750 l/min
Operating pressure MPa	-0.095 ... 1 MPa
Working pressure	-0.95 ... 10 bar
Design structure	Toggle lever Piston slide
Type of reset	mechanical spring
Max. stroke limit (hard)	11.8 mm
Nominal size	5.2 mm
Instructions for use	Risk of pinching
Sealing principle	soft
Assembly position	Any
Type of piloting	direct
Flow direction	reversible
Lap	Positive overlap
Max. actuating speed for side actuation	0.7 m/s
Max. switching frequency	3 Hz
Cam angle	30 deg
Operating medium	Compressed air in accordance with ISO8573-1:2010 [7:-:-]
Note on operating and pilot medium	Lubricated operation possible (subsequently required for further operation)
Corrosion resistance classification CRC	1 - Low corrosion stress
PWIS conformity	VDMA24364-B1/B2-L
Medium temperature	-10 ... 60 °C
Ambient temperature	-10 ... 60 °C
Note on ambient temperature	Influence of heat on wear
Actuating force	23.5 N
Product weight	255 g
Mounting type	with through hole
Pneumatic connection, port 1	1/8 NPT
Pneumatic connection, port 2	1/8 NPT
Pneumatic connection, port 3	1/8 NPT
Pneumatic connection, port 4	1/8 NPT
Pneumatic connection, port 5	1/8 NPT
Materials note	Conforms to RoHS
Material mounting adaptor	steel, galvanized
Material cover	PA-reinforced
Material seals	NBR
Material housing	Anodised wrought aluminium alloy