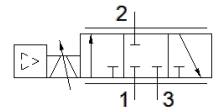
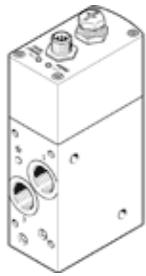


Proportional flow control valve VPCF-6-L-8-G38-10-V1-E-EX2

Part number: 8041716

FESTO



Data sheet

| Feature | Value |
|--|--|
| Valve function | 3-way proportional flow control valve |
| Design structure | Piston slide With built-in pressure sensors |
| Type of piloting | direct |
| Type of actuation | electrical |
| Type of reset | Magnetic spring |
| Flow direction | non reversible |
| Assembly position | Any |
| Sealing principle | Hard |
| Nominal size | 6 mm |
| Short circuit strength | Yes |
| Type of display | LED |
| Flow rate range | 0 ... 1,500 l/min |
| Operating pressure MPa | 0.1 ... 1 MPa |
| Working pressure | 1 ... 10 bar |
| Flow rate control range | 30 ... 1,500 l/min |
| Note on the flow rate control range | Regulation takes place as of 30 l/min; below this reference value the flow control valve switches to the exhaust port The accuracy specifications provided are based on a flow rate control range of 75-1500 l/min |
| Repetition accuracy in ± %FS | 0.5 %FS |
| Absolute accuracy in ± %FS at room temperature | 3 %FS |
| Hysteresis FS | 0.8 %FS |
| Ambient temperature | 0 ... 50 °C |
| Medium temperature | 15 ... 35 °C |
| Operating medium | Compressed air in accordance with ISO8573-1:2010 [6:4:4] |
| Note on operating and pilot medium | Lubricated operation not possible Maximum particle size: 5 µm |
| Protection class | IP65 |
| Note on degree of protection | in assembled condition |
| Authorization | RCM Mark |
| CE symbol (see declaration of conformity) | according to EU-EMV guideline according to EU-Ex protection guideline (ATEX) in accordance with EU RoHS directive |
| UKCA marking (see declaration of conformity) | To UK instructions for EMC To UK EX instructions To UK RoHS instructions |
| ATEX category Gas | II 3G |
| ATEX category Dust | II 3D |
| Explosion ignition protection type Gas | Ex nA IIC T5 X Gc |
| Explosion ignition protection type Dust | Ex tc IIIC T60°C X Dc |
| Explosion-proof ambient temperature | 0°C ≤ Ta ≤ +50°C |
| PWIS conformity | VDMA24364-B1/B2-L |
| Materials note | Conforms to RoHS |
| Vibration resistance | Transport application test at severity level 2 in accordance with FN 942017-4 and EN 60068-2-6 |

| Feature | Value |
|--|---|
| Shock resistance | Shock test with severity level 2 in accordance with FN 942017-5 and EN 60068-2-27 |
| Corrosion resistance classification CRC | 1 - Low corrosion stress |
| Nominal operating voltage DC | 24 V |
| Operating voltage range DC | 20.4 ... 30 V |
| Residual ripple | 5 % |
| Max. current consumption | 1.2 A |
| Current consumption with load-free outputs | 150 mA |
| Switch output | PNP |
| Switching input | PNP |
| Current-carrying capacity per output | 100 mA |
| Polarity protected | for operating voltage |
| Duty cycle | 100 % |
| Max. electrical power consumption | 36 W |
| Signal range, analog output | 0 - 10 V |
| Signal range, analog input | 0 - 10 V |
| Diagnosis function | Display via LED |
| Electrical connection | 8-pin A-coded M12x1 Plug |
| Mounting type | Direct mounting via through-holes Direct mounting via threads |
| Pneumatic connection, port 1 | G3/8 |
| Pneumatic connection, port 2 | G3/8 |
| Pneumatic connection, port 3 | G3/8 |
| Product weight | 856 g |
| Material housing | Anodised wrought aluminium alloy |
| Material seals | FPM HNBR |