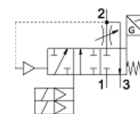
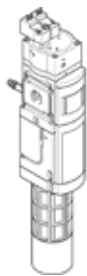


Soft start/quick exhaust valve MS6-SV-1/2-D-10V24-2M8-SO-AG

Part number: 8038490

FESTO



Data sheet

Feature	Value
Series	MS
Size	6
Grid dimension	62 mm
Safety function	Exhausting Prevention of unexpected start-up (pressurisation)
Safety Integrity Level (SIL)	Exhausting / SIL 3 Prevention of unexpected start-up (pressurisation)/SIL 3
Performance level (PL)	Exhaust/category 3, Performance Level d Prevention of unexpected start-up (pressurisation)/category 3, Performance Level d
Note on forced dynamisation	Switching frequency min. 1/month
Design structure	Piston seat
Freedom from overlap	No
Type of actuation	electrical
Pilot air supply	Internal
Sealing principle	soft
Exhaust-air function	not throttleable
Position sensing principle	Solenoid actuator principle
Conforms to standard	DIN EN ISO 13849-1 DIN EN ISO 13849-2
Manual override	None
Type of reset	mechanical spring
Type of piloting	Piloted
Valve function	3/2 closed, monostable Pressure build-up function
Operating pressure MPa	0.35 ... 1 MPa
Working pressure	3.5 ... 10 bar
Pressure gauge	with pressure gauge
C value	19.3 l/sbar
b value	0.21
Standard nominal flow rate	4,300 l/min
Standard flow rate exhaust 0.6->0 MPa (6->0 bar, 87->0 psi)	9,000 l/min
Max. switching frequency	0.5 Hz
Switching time off	40 ms
Switching time on	130 ms
Duty cycle	100 %
Signal status display	LED Switching outputs
Characteristic coil data	24 V DC: 1.8 W
Nominal operating voltage DC	24 V
Permissible voltage fluctuation	+10 % / -15 %
Operating medium	Compressed air in accordance with ISO8573-1:2010 [7:4:4]
Note on operating and pilot medium	Lubricated operation possible (subsequently required for further operation)
Corrosion resistance classification CRC	2 - Moderate corrosion stress
Materials note	Conforms to RoHS

Feature	Value
PWIS conformity	VDMA24364-B1/B2-L
Sound pressure level	75 dB(A)
Protection class	IP65 with plug socket
Medium temperature	-10 ... 50 °C
Ambient temperature	-10 ... 50 °C
Storage temperature	-10 ... 50 °C
Shock resistance	Shock test with severity level 2 in accordance with FN 942017-5 and EN 60068-2-27
Vibration resistance	Transport application test at severity level 2 in accordance with FN 942017-4 and EN 60068-2-6
Authorization	RCM Mark
KC mark	KC-EMV
CE symbol (see declaration of conformity)	according to EU machines guideline
Mounting type	Line installation with accessories Optional
Assembly position	Any
Product weight	2,110 g
Pneumatic connection, port 1	G1/2
Pneumatic connection, port 2	G1/2
Pneumatic connection, port 3	G1
Electrical connection	2-pin 2x plug Plug pattern type C to EN 175301-803 to EN 175301-803
Electrical connection, proximity sensor	2x cable with plug 3-pin M8 Turnable threads
Material housing	Aluminum die cast
Material seals	NBR
Material piston rod	High alloy steel, non-corrosive