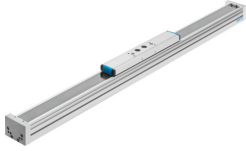


# Electric linear actuator ELFA-RF-80- -

Part number: 8037968

FESTO



## Data sheet

Feature	Value
Working stroke	50 mm...7000 mm
Size	80
Mounting position	Any
Guide	Roller guide
Structural design	Guide
Max. acceleration	50 m/s <sup>2</sup>
Max. speed	10 m/s
Corrosion resistance class (CRC)	0 - No corrosion stress
LABS (PWIS) conformity	VDMA24364 zone III
Degree of protection	IP40
Ambient temperature	-10 °C...60 °C
2nd moment of area Iy	269840 mm <sup>4</sup>
2nd moment of area Iz	1018510 mm <sup>4</sup>
Max. force Fy	800 N
Max. force Fz	800 N
Max. no-load resistance to shifting	40 N
Max. torque Mx	30 Nm
Max. force Fy total axis	800 N
Max. force Fz total axis	800 N
Max. moment Mx total axis	30 Nm
Reference service life	10000 km
Fy with theoretical service life of 100 km (from a guide perspective only)	3712 N
Fz with theoretical service life of 100 km (from a guide perspective only)	3712 N
Mx with theoretical service life of 100 km (from a guide perspective only)	139 Nm
Additional weight per 10 mm stroke	47.13 g
Dynamic deflection (load moved)	0.05% of axis length, maximum 0.5 mm
Static deflection (load at standstill)	0.1 % of axis length
Type of mounting	With accessories
Material of end caps	Wrought aluminum alloy Anodized

<b>Feature</b>	<b>Value</b>
Profile material	Wrought aluminum alloy Anodized
Note on materials	RoHS-compliant
Cover strip material	Stainless steel strip
Guide material	Steel
Slide material	Wrought aluminum alloy Anodized