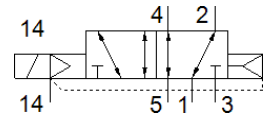
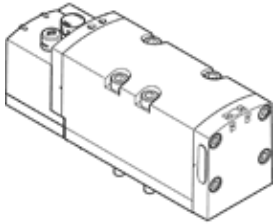


# Solenoid valve

## VSVA-B-M52-AZ-D2-1T1L

Part number: 8034986

FESTO



## Data sheet

| Feature                                     | Value  |
|---|--|
| Valve function                              | 5/2 monostable   |
| Type of actuation                           | electrical   |
| Width                                       | 52 mm  |
| Standard nominal flow rate                  | 2,900 l/min  |
| Operating pressure MPa                      | -0.09 ... 1 MPa  |
| Working pressure                            | -0.9 ... 10 bar  |
| Design structure                            | Piston slide   |
| Type of reset                               | Air spring   |
| Authorization                               | c UL us - Recognized (OL)  |
| KC mark                                     | KC-EMV   |
| CE symbol (see declaration of conformity)   | according to EU-EMV guideline  |
| Protection class                            | IP65<br>NEMA 4   |
| Grid dimension                              | 59 mm  |
| Exhaust-air function                        | throttleable<br>Via throttle plate<br>Via individual sub-base                                  |
| Sealing principle                           | soft   |
| Assembly position                           | Any  |
| Conforms to standard                        | ISO 5599-2   |
| Manual override                             | Covered  |
| Type of piloting                            | Piloted  |
| Pilot air supply                            | external   |
| Flow direction                              | Any  |
| Signal status display                       | LED  |
| Pilot pressure MPa                          | 0.3 ... 1 MPa  |
| Pilot pressure                              | 3 ... 10 bar   |
| Flow rate of valve                          | 4,000 l/min  |
| Flow rate of valve on individual subbase    | 3,400 l/min  |
| Flow rate of pneumatically linked valve     | 2,900 l/min  |
| Switching time off                          | 45 ms  |
| Switching time on                           | 40 ms  |
| Duty cycle                                  | 100 %  |
| Max. positive test pulse with logic 0       | 1,000 µs   |
| Max. negative test pulse with logic 1       | 3,500 µs   |
| Nominal breakaway current per solenoid coil | 165 mA up to 30 ms   |
| Nominal current with current reduction      | 35 mA after 30 ms  |
| Characteristic coil data                    | 24 V DC: 4.6 W   |
| Surge strength                              | 2.5 kV   |
| Degree of contamination                     | 3  |
| Permissible voltage fluctuation             | +/- 10 %   |
| Operating medium                            | Compressed air in accordance with ISO8573-1:2010 [7:4:4]                                       |
| Note on operating and pilot medium          | Lubricated operation possible (subsequently required for further operation)                    |
| Vibration resistance                        | Transport application test at severity level 2 in accordance with FN 942017-4 and EN 60068-2-6 |

| <b>Feature</b>                          | <b>Value</b>  |
|---|---|
| Shock resistance                        | Shock test with severity level 2 in accordance with FN 942017-5 and EN 60068-2-27 |
| Corrosion resistance classification CRC | 0 - No corrosion stress   |
| PWIS conformity                         | VDMA24364-B1/B2-L   |
| Medium temperature                      | -5 ... 50 °C  |
| Relative air humidity                   | 0 - 90 %  |
| Ambient temperature                     | -5 ... 50 °C  |
| Product weight                          | 702 g   |
| Electrical connection                   | Plug-in<br>as per ISO 5599-2  |
| Mounting type                           | On subbase  |
| Auxiliary pilot air port 12/14          | Connection plate size 2 as per ISO 5599-2   |
| Pilot exhaust port 82/84                | Optional<br>Not ducted as per standard<br>Ducted                                  |
| Pneumatic connection, port 1            | Connection plate size 2 as per ISO 5599-2   |
| Pneumatic connection, port 2            | Connection plate size 2 as per ISO 5599-2   |
| Pneumatic connection, port 3            | Connection plate size 2 as per ISO 5599-2   |
| Pneumatic connection, port 4            | Connection plate size 2 as per ISO 5599-2   |
| Pneumatic connection, port 5            | Connection plate size 2 as per ISO 5599-2   |
| Materials note                          | Conforms to RoHS  |
| Material seals                          | FPM<br>HNBR<br>NBR  |
| Material housing                        | Aluminum die cast<br>PA   |
| Material screws                         | Galvanized steel  |