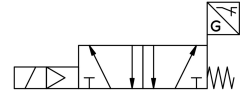
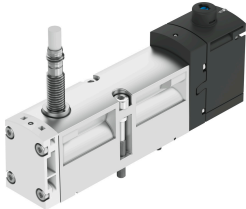


# Air solenoid valve VSVA-B-M52-MZ-A1-1T1L-ANP

Part number: 8033077

FESTO



## Data sheet

| Feature                                    | Value   |
|--|---|
| Valve function                             | 5/2, monostable   |
| Actuation type                             | Electrical  |
| Width                                      | 26 mm   |
| Standard nominal flow rate                 | 1100 l/min  |
| Pneumatic working port                     | Sub-base, size 26 mm as per ISO 15407-2<br>G1/4                           |
| Operating pressure                         | -0.09 MPa...1 MPa<br>-0.9 bar...10 bar                                    |
| Structural design                          | Piston gate valve   |
| Reset method                               | Mechanical spring   |
| KC characters                              | KC EMC  |
| CE marking (see declaration of conformity) | As per EU EMC directive   |
| Degree of protection                       | IP65<br>NEMA 4  |
| Nominal width                              | 9 mm  |
| Exhaust air function                       | With flow control option<br>Via throttle plate<br>Via individual sub-base |
| Sealing principle                          | Soft  |
| Mounting position                          | Any   |
| Manual override                            | Covered   |
| Type of control                            | Pilot-controlled  |
| Pilot air supply port                      | External  |
| Flow direction                             | Any   |
| Measuring principle                        | Inductive   |
| Lap  | Overlap   |
| Sensor reverse polarity protection         | For all electrical connections  |
| Signal status display                      | LED   |
| Switching position sensing                 | Normal position with sensor   |
| Sensor switching status indication         | LED   |
| Pilot pressure MPa                         | 0.3 MPa...1 MPa   |
| Pilot pressure                             | 3 bar...10 bar  |
| Flow rate of pneumatic valve               | 1400 l/min  |

| Feature   | Value  |
|---|--|
| Flow rate of pneumatic valve on individual sub-base                     | 1200 l/min   |
| Optimized flow rate of pneumatic valve, pneumatically concatenated flow | 1350 l/min   |
| Optimized flow rate of pneumatic valve pneumatically concatenated flow  | 1100 l/min   |
| Switching time off  | 54 ms  |
| On switching time   | 20 ms  |
| Pneumatic valve - sensor ON switching time                              | 60 ms  |
| Pneumatic valve - sensor switching time off                             | 11 ms  |
| Duty cycle  | 100%   |
| Max. positive test pulse with 0 signal                                  | 1200 µs  |
| Max. negative test pulse on 1 signal                                    | 1100 µs  |
| Nominal operating voltage DC  | 24 V   |
| Switching output  | NPN  |
| Coil characteristics  | 24 V DC: 1.6 W   |
| Surge resistance  | 2.5 kV   |
| Contamination level   | 3  |
| Permissible voltage fluctuations  | +/- 10 %   |
| Operating medium  | Compressed air as per ISO 8573-1:2010 [7:4:4]  |
| Information on operating and pilot media                                | Operation with oil lubrication possible (required for further use)                   |
| Vibration resistance  | Transport application test with severity level 2 as per FN 942017-4 and EN 60068-2-6 |
| Shock resistance  | Shock test with severity level 2 as per FN 942017-5 and EN 60068-2-27                |
| Corrosion resistance class (CRC)  | 0 - No corrosion stress  |
| LABS (PWIS) conformity  | VDMA24364-B1/B2-L  |
| Temperature of medium   | -5 °C...50 °C  |
| Relative air humidity   | 0 - 90 %   |
| Noise level   | 85 dB(A)   |
| Ambient temperature   | -5 °C...50 °C  |
| Max. tightening torque for valve mounting                               | 1.8 Nm...2.2 Nm  |
| Product weight  | 264 g  |
| DC sensor operating voltage range                                       | 10 V...30 V  |
| Sensor short circuit protection   | Pulsed   |
| Sensor idle current   | 10 mA  |
| Max. output current, sensor   | 200 mA   |
| Sensor max. switching frequency   | 5000 Hz  |
| Sensor residual ripple  | ± 10 %   |
| Sensor voltage drop   | 2 V  |
| Electrical connection   | 4-pin<br>Plug<br>as per ISO 15407-2  |
| Sensor connection   | Plug<br>3-pin<br>M8x1  |
| Type of mounting  | On sub-base  |
| Pilot air port 12/14  | Sub-base, size 26 mm as per ISO 15407-2  |
| Pilot exhaust air port 82/84  | Ducted<br>Not ducted<br>Optionally:  |
| Pneumatic connection 1  | Sub-base, size 26 mm as per ISO 15407-2  |
| Pneumatic connection 2  | Sub-base, size 26 mm as per ISO 15407-2  |
| Pneumatic connection 3  | Sub-base, size 26 mm as per ISO 15407-2  |
| Pneumatic connection 4  | Sub-base, size 26 mm as per ISO 15407-2  |
| Pneumatic connection 5  | Sub-base, size 26 mm as per ISO 15407-2  |
| Note on materials   | RoHS-compliant   |

| <b>Feature</b>             | <b>Value</b>            |
|----------------------------|-------------------------|
| Seals material             | FPM<br>NBR              |
| Housing material           | Die-cast aluminum<br>PA |
| Material of screws         | Steel, galvanized       |
| Switching element function | N/C contact             |