

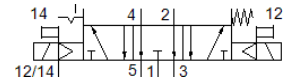
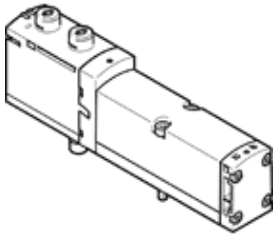
# Solenoid valve

## VSVA-B-P53EP-ZD-A1-1T1L

Part number: 8026638

FESTO

This type is suitable for vacuum.



## Data sheet

| Feature  | Value   |
|--|---|
| Valve function   | 5/3 exhausted   |
| Type of actuation  | electrical  |
| Width  | 26 mm   |
| Standard nominal flow rate                                   | 1,000 l/min   |
| Operating pressure MPa                                       | -0.09 ... 1 MPa   |
| Working pressure   | -0.9 ... 10 bar   |
| Design structure   | Piston slide  |
| Type of reset  | mechanical spring<br>Electrical activation                                  |
| Protection class   | IP65<br>NEMA 4  |
| Nominal size   | 9 mm  |
| Exhaust-air function   | throttleable<br>Via throttle plate<br>Via individual sub-base               |
| Sealing principle  | soft  |
| Assembly position  | Any   |
| Manual override  | detenting<br>Pushing<br>Covered   |
| Type of piloting   | Piloted   |
| Pilot air supply   | external<br>Internal  |
| Flow direction   | non reversible  |
| Lap  | Positive overlap  |
| Signal status display  | LED   |
| Pilot pressure MPa   | 0.3 ... 1 MPa   |
| Pilot pressure   | 3 ... 10 bar  |
| Flow rate of valve   | 1,400 l/min   |
| Flow rate of valve on individual subbase                     | 1,200 l/min   |
| Optimized flow rate of valve pneumatically concatenated flow | 1,350 l/min   |
| Flow rate of pneumatically linked valve                      | 1,000 l/min   |
| Duty cycle   | 100 %   |
| Max. positive test pulse with logic 0                        | 1,200 µs  |
| Max. negative test pulse with logic 1                        | 1,100 µs  |
| Nominal operating voltage DC                                 | 24 V  |
| Characteristic coil data                                     | 24 V DC: 1.6 W  |
| Surge strength   | 2.5 kV  |
| Degree of contamination                                      | 3   |
| Permissible voltage fluctuation                              | +/- 10 %  |
| Operating medium   | Compressed air in accordance with ISO8573-1:2010 [7:4:4]                    |
| Note on operating and pilot medium                           | Lubricated operation possible (subsequently required for further operation) |

| <b>Feature</b>                          | <b>Value</b>   |
|---|--|
| Vibration resistance                    | Transport application test at severity level 2 in accordance with FN 942017-4 and EN 60068-2-6 |
| Shock resistance                        | Shock test with severity level 2 in accordance with FN 942017-5 and EN 60068-2-27              |
| Corrosion resistance classification CRC | 0 - No corrosion stress  |
| PWIS conformity                         | VDMA24364-B1/B2-L  |
| Medium temperature                      | -5 ... 50 °C   |
| Relative air humidity                   | 0 - 90 %   |
| Sound pressure level                    | 85 dB(A)   |
| Ambient temperature                     | -5 ... 50 °C   |
| Max. tightening torque, valve mounting  | 1.8 ... 2.2 Nm   |
| Product weight                          | 291 g  |
| Electrical connection                   | 4-pin<br>Plug<br>according to ISO 15407-2  |
| Mounting type                           | On subbase   |
| Auxiliary pilot air port 12/14          | Manifold block, size 26 mm acc. to ISO 15407-2   |
| Pilot exhaust port 82/84                | Optional<br>Ducted<br>Non-ducted   |
| Pneumatic connection, port 1            | Manifold block, size 26 mm acc. to ISO 15407-2   |
| Pneumatic connection, port 2            | Manifold block, size 26 mm acc. to ISO 15407-2   |
| Pneumatic connection, port 3            | Manifold block, size 26 mm acc. to ISO 15407-2   |
| Pneumatic connection, port 4            | Manifold block, size 26 mm acc. to ISO 15407-2   |
| Pneumatic connection, port 5            | Manifold block, size 26 mm acc. to ISO 15407-2   |
| Materials note                          | Conforms to RoHS   |
| Material seals                          | FPM<br>NBR   |
| Material housing                        | Aluminum die cast<br>PA  |
| Material screws                         | Galvanized steel   |