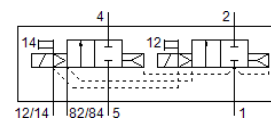


Solenoid valve

VMPA14-M1HF-I-PI

Part number: 578816

FESTO



Data sheet

Feature	Value
Valve function	2x2/2 closed, monostable
Type of actuation	electrical
Valve size	14 mm
Standard nominal flow rate	550 ... 670 l/min
Operating pressure MPa	0.3 ... 1 MPa
Working pressure	3 ... 10 bar
Design structure	Piston slide
Type of reset	Air spring
Authorization	c UL us - Recognized (OL)
Protection class	IP65 in assembled condition to IEC 60529
Sealing principle	soft
Assembly position	Any
Manual override	detenting Pushing
Type of piloting	Piloted
Flow direction	non reversible
Lap	Positive overlap
Signal status display	Yes
Pilot pressure MPa	0.3 ... 0.8 MPa
Pilot pressure	3 ... 8 bar
Suitability for vacuum	No
Information on standard nominal flow rate	MPA-C: 730 l/min MPA-L: 670 l/min MPA-S: 550 l/min
Standard nominal flow rate with QS-8	550 ... 730 l/min
Switching time off	28 ms
Switching time on	10 ms
Max. positive test pulse with logic 0	400 µs
Max. negative test pulse with logic 1	200 µs
Permissible voltage fluctuation	+/- 25 %
Operating medium	Compressed air in accordance with ISO8573-1:2010 [7:4:4]
Note on operating and pilot medium	Lubricated operation possible (subsequently required for further operation)
Vibration resistance	Transport application test at severity level 2 in accordance with FN 942017-4 and EN 60068-2-6
Shock resistance	Shock test with severity level 2 in accordance with FN 942017-5 and EN 60068-2-27
Corrosion resistance classification CRC	1 - Low corrosion stress
PWIS conformity	VDMA24364-B1/B2-L
Storage temperature	-20 ... 40 °C
Food-safe	See Supplementary material information
Medium temperature	-5 ... 50 °C
Relative air humidity	Max. 90% at 40°C
Ambient temperature	-5 ... 60 °C

Feature	Value
Max. tightening torque, valve mounting	0.65 Nm
Product weight	77 g
Mounting type	with through hole
Materials note	Conforms to RoHS
Material seals	NBR
Material housing	Aluminum die cast