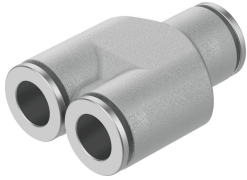


Push-in Y-connector NPQH-Y-Q8-Q6-P10

Part number: 578414

FESTO



Data sheet

Feature	Value
Size	Standard
Nominal width	5.5 mm
Tubing insertion depth	15.8 mm...16 mm
Note on the tubing insertion depth	Ø6 depth 15.8 mm Ø8 depth 16 mm
Mounting position	Any
Design	Y-shape
Pack size	10
Structural design	Push-pull principle
Operating pressure for entire temperature range	-0.095 MPa...2 MPa -0.95 bar...20 bar -13.775 psi...290 psi
Information on operating pressure	Water: max. 0.6 MPa at 0 - 50 °C
Certificate issuing authority	NSF C0523185
Operating medium	Compressed air as per ISO 8573-1:2010 [7:-:-] Water (liquid, ice-free)
Information on operating and pilot media	Operation with oil lubrication possible
Corrosion resistance class (CRC)	3 - High corrosion stress
LABS (PWIS) conformity	VDMA24364-B1/B2-L
Cleanroom class	Class 4 according to ISO 14644-1
For use in the food industry	See declaration of conformity NSF/ANSI 169
Ambient temperature	0 °C...150 °C
Product weight	52.6 g
Pneumatic connection 1	for pneumatic tubing outside diameter 8 mm
Pneumatic connection 2	for pneumatic tubing outside diameter 6 mm
Note on materials	RoHS-compliant
Housing material	Brass, chemically nickel-plated
Guard ring material	PEI
Releasing ring material	Brass, chemically nickel-plated
Material of tubing seal	FPM

Feature	Value
Material of tube retaining claw	High-alloy stainless steel
Thrust ring material	PEI