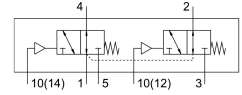


# Pneumatic valve VUWG-L10-T32U-M-M5

Part number: 574252

FESTO



## Data sheet

| Feature                                  | Value  |
|--|--|
| Valve function                           | 2x3/2, open, monostable  |
| Actuation type                           | Pneumatic  |
| Valve size                               | 10 mm  |
| Standard nominal flow rate               | 125 l/min  |
| Pneumatic working port                   | M5   |
| Operating pressure                       | -0.9 bar...10 bar  |
| Structural design                        | Piston gate valve  |
| Reset method                             | Mechanical spring  |
| Width dimension                          | 10.5 mm  |
| Exhaust air function                     | With flow control option   |
| Sealing principle                        | Soft   |
| Mounting position                        | Any  |
| Manual override                          | None   |
| Type of control                          | Direct   |
| Flow direction                           | Reversible   |
| Lap                                      | Overlap  |
| Pilot pressure                           | 3 bar...10 bar   |
| Suitability for vacuum                   | yes  |
| Switching time off                       | 7 ms   |
| On switching time                        | 6 ms   |
| Operating medium                         | Compressed air as per ISO 8573-1:2010 [7:4:4]                      |
| Information on operating and pilot media | Operation with oil lubrication possible (required for further use) |
| Corrosion resistance class (CRC)         | 2 - Moderate corrosion stress                                      |
| LABS (PWIS) conformity                   | VDMA24364-B1/B2-L  |
| Temperature of medium                    | -5 °C...50 °C  |
| Pilot medium                             | Compressed air as per ISO 8573-1:2010 [7:4:4]                      |
| Ambient temperature                      | -5 °C...60 °C  |
| Product weight                           | 51 g   |
| Type of mounting                         | Optionally:<br>On PR rail<br>With through-hole                     |
| Pilot air port 12                        | M5   |

| <b>Feature</b>         | <b>Value</b>         |
|------------------------|----------------------|
| Pilot air port 14      | M5                   |
| Pneumatic connection 1 | M5                   |
| Pneumatic connection 2 | M5                   |
| Pneumatic connection 3 | M5                   |
| Pneumatic connection 4 | M5                   |
| Pneumatic connection 5 | M5                   |
| Note on materials      | RoHS-compliant       |
| Seals material         | HNBR<br>NBR          |
| Housing material       | Aluminum<br>Anodized |