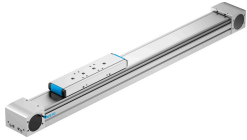


Belt driven linear actuator ELGA-TB-G-80- -

Part number: 570503

FESTO



Data sheet

Feature	Value
Drive pinion effective diameter	39.79 mm
Working stroke	50 mm...8500 mm
Size	80
Toothed belt elongation	0.19 %
Toothed belt pitch	5 mm
Mounting position	Any
Guide	Sliding guide
Structural design	Electromechanical linear axis with toothed belt
Motor type	Stepper motor Servo motor
Max. acceleration	50 m/s ²
Max. speed	5 m/s
Repetition accuracy	±0.08 mm
Duty cycle	100%
LABS (PWIS) conformity	VDMA24364 zone III
Degree of protection	IP40
Ambient temperature	-10 °C...60 °C
2nd moment of area Ix	277000 mm ⁴
2nd moment of area Iy	907000 mm ⁴
Max. driving torque	16.9 Nm
Max. force Fy	200 N
Max. force Fz	800 N
Max. no-load resistance to shifting	50 N
Max. torque Mx	10 Nm
Max. torque My	60 Nm
Max. torque Mz	20 Nm
Max. feed force Fx	800 N
No-load driving torque	1 Nm
Torsion moment of inertia It	108000 mm ⁴
Mass moment of inertia JH per meter of stroke	0.093 kgcm ²
Mass moment of inertia JL per kg of payload	3.96 kgcm ²

Feature	Value
Mass moment of inertia JO	6.66 kgcm ²
Feed constant	125 mm/U
Material of end caps	Wrought aluminum alloy, anodized
Profile material	Wrought aluminum alloy, anodized
Note on materials	RoHS-compliant
Cover strip material	Stainless steel strip
Drive cover material	Wrought aluminum alloy, anodized
Slide carriage material	POM
Guide rail material	Wrought aluminum alloy, anodized
Belt pulley material	High-alloy stainless steel
Slide material	Wrought aluminum alloy, anodized
Toothed belt clamping component material	Cast stainless steel
Toothed belt material	Polychloroprene with glass cord and nylon coating Polyurethane with steel cord and nylon cover