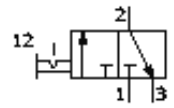


start valve MS9-EM-NG-VS

Part number: 562953

FESTO



Data sheet

Feature	Value
Series	MS
Size	9
Grid dimension	90 mm
Design structure	Piston slide
Type of actuation	manual
Sealing principle	soft
Exhaust-air function	not throttleable
Actuator lock	Rotary knob with lock
Type of reset	Forced guidance
Type of piloting	direct
Valve function	3/2 bistable
Working pressure	0 ... 20 bar
Standard nominal flow rate	18,000 l/min
Standard nominal flow rate 2-3	14,100 l/min
Operating medium	filtered compressed air, grade of filtration 40 µm, lubricated or unlubricated
Corrosion resistance classification CRC	2
Materials note	Conforms to RoHS
Medium temperature	-10 ... 60 °C
Ambient temperature	-10 ... 60 °C
Mounting type	Optional with accessories Line installation
Assembly position	Any
Product weight	2,200 g
Pneumatic connection, port 3	NPT1-11 1/2
Material information, piston spool	POM
Materials information for seals	NBR
Materials information, housing	Aluminum die cast