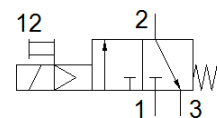


start valve MS9-EE-G-V24-S-VS

Part number: 562940

FESTO

Electrical, with silencer, direction of flow: from left to right



Data sheet

Feature	Value
Series	MS
Size	9
Grid dimension	90 mm
Design structure	Piston slide
Type of actuation	electrical
Sealing principle	soft
Exhaust-air function	not throttleable
Manual override	detenting Pushing
Type of reset	mechanical spring
Type of piloting	Piloted
Valve function	3/2 closed, monostable
Working pressure	3.5 ... 16 bar
Standard nominal flow rate	18,000 l/min
Standard nominal flow rate 2-3	14,100 l/min
Duty cycle	100 %
Characteristic coil data	24 V DC: 4.5 W
Operating medium	Compressed air in accordance with ISO8573-1:2010 [7:4:4]
Note on operating and pilot medium	Lubricated operation possible (subsequently required for further operation)
Corrosion resistance classification CRC	2 - Moderate corrosion stress
Materials note	Conforms to RoHS
PWIS conformity	VDMA24364-B1/B2-L
Medium temperature	-10 ... 60 °C
Sound pressure level	93 dB(A)
Protection class	IP65
Ambient temperature	-10 ... 60 °C
Mounting type	Line installation with accessories Optional
Assembly position	Any
Product weight	2,300 g
Pneumatic connection, port 3	G1
Electrical connection	Plug pattern type A to EN 175301-803 Plug Per DIN EN 175301-803 Cubic design
Material Piston slide	POM
Material seals	NBR
Material housing	Aluminum die cast