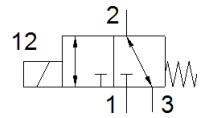
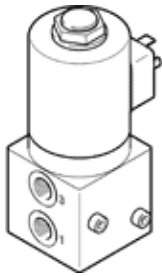


# Basic valve

## VOFD-LT-M32-MN-G14-F10

Part number: 562881

FESTO



### Data sheet

Feature	Value
Valve function	3/2 closed, monostable
Type of actuation	electrical
Width	51 mm
Standard nominal flow rate	450 l/min
Working pressure	0 ... 10 bar
Design structure	Directly actuated poppet valve
Type of reset	mechanical spring
Protection class	IP65
Nominal size	5 mm
Sealing principle	soft
Assembly position	Any
Manual override	None
Type of piloting	direct
Flow direction	reversible
Safety Integrity Level (SIL)	bis SIL 3 High Demand mode bis SIL 3 Low Demand mode
Suitability for vacuum	Yes
Flow rate Kv ventilation	0.36 m <sup>3</sup> /h
Flow rate Kv exhaust	0.36 m <sup>3</sup> /h
Switching time off	9 ms
Switching time on	45 ms
Duty cycle	100%
Operating medium	Compressed air in accordance with ISO8573-1:2010 [-:~:]
Extended ambient temperature	-25 - 60 °C Low Demand mode
Corrosion resistance classification CRC	4
Medium temperature	-10 ... 60 °C
Ambient temperature	-10 ... 60 °C
Product weight	560 g
Pneumatic connection, port 1	G1/4
Pneumatic connection, port 2	G1/4
Pneumatic connection, port 3	G1/4
Materials note	Contains PWIS substances Conforms to RoHS
Materials information for seals	NBR
Materials information, housing	Aluminum Hard Ematal plated