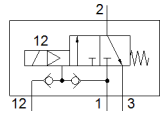
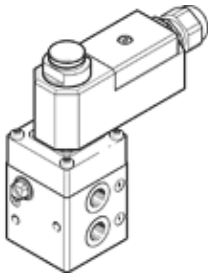


Solenoid valve

VOFC-L-M32C-MC-N14-1UK4-EX4ME

Part number: 562879

FESTO



Data sheet

Feature	Value
Valve function	3/2 closed, monostable
Type of actuation	electrical
Standard nominal flow rate	900 l/min
Working pressure	2 ... 8 bar
Design structure	Pilot-actuated piston poppet valve
Type of reset	mechanical spring
Protection class	IP65
Nominal size	6 mm
Sealing principle	soft
Assembly position	Any
Manual override	None
Type of piloting	Piloted
Pilot air supply	Internal
Flow direction	non reversible
Safety Integrity Level (SIL)	up to SIL4 High Demand mode up to SIL4 Low Demand mode
Note on working pressure	0 - 8 bar with external pilot air
Flow rate Kv ventilation	0.72 m ³ /h
Flow rate Kv exhaust	1.38 m ³ /h
Switching time off	12 ms
Switching time on	20 ms
Duty cycle	100%
Characteristic coil data	24 V AC: 1.8 VA 24 V DC: 1.8 W
Permissible voltage fluctuation	-15 % / +10 %
ATEX category Gas	II 2G
Explosion ignition protection type Gas	Ex emb II T6, T5
ATEX category Dust	II 2D
Explosion ignition protection type Dust	Ex tD A21 IP65 T80°C, T95°C
Explosion-proof ambient temperature	T5: -20°C ≤ Ta ≤ +60°C T6: -20°C ≤ Ta ≤ +50°C T80°C: -20°C ≤ Ta ≤ +50°C T95°C: -20°C ≤ Ta ≤ +60°C
Certificate issuing department	PTB 08 ATEX 2042 X
Operating medium	Compressed air in accordance with ISO8573-1:2010 [-:-]
CE symbol (see declaration of conformity)	according to EU-Ex protection guideline (ATEX)
Corrosion resistance classification CRC	4
Medium temperature	-25 ... 60 °C
Product weight	880 g
Electrical connection	Terminal box, cable entry thread M20x1.5
Pneumatic connection, port 1	NPT1/4-18
Pneumatic connection, port 2	NPT1/4-18
Pneumatic connection, port 3	NPT1/4-18
Materials note	Contains PWIS substances Conforms to RoHS
Materials information for seals	NBR
Materials information, housing	Aluminum Hard Ematal plated