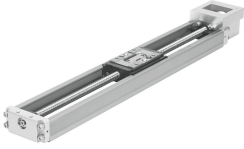


# Electric linear slide EGSK-26-100-6P

Part number: 562769

FESTO



## Data sheet

Feature	Value
Working stroke	100 mm
Size	26
Reversing backlash	20 µm
Screw diameter	8 mm
Spindle pitch	6 mm/U
Mounting position	Any
Guide	Recirculating ball bearing guide
Structural design	Electromechanical linear axis with ball screw drive
Homing	Reference switch
Spindle type	Ball screw drive
Max. acceleration	10 m/s <sup>2</sup>
Max. speed	0.59 m/s
Repetition accuracy	±0.01 mm
Corrosion resistance class (CRC)	0 - No corrosion stress
LABS (PWIS) conformity	VDMA24364 zone III
Degree of protection	IP10
Ambient temperature	0 °C...40 °C
Fixed bearing dynamic basic load rating	1380 N
Linear guide dynamic basic load rating	5746 N
Dynamic basic load rating, ball screw drive	1950 N
2nd moment of area Iy	17000 mm <sup>4</sup>
2nd moment of area Iz	150000 mm <sup>4</sup>
Max. driving torque	0.11 Nm
Max. force Fy	1541 N
Max. force Fz	1541 N
Max. torque Mx	26.2 Nm
Max. torque My	8.9 Nm
Max. torque Mz	8.9 Nm
Max. feed force Fx	116 N
No-load driving torque	0.015 Nm
Ball screw drive statistical basic load rating	3510 N

<b>Feature</b>	<b>Value</b>
Linear guide statistical basic load rating	12150 N
Mass moment of inertia JH per meter of stroke	0.0316 kgcm <sup>2</sup>
Mass moment of inertia JO	0.00481 kgcm <sup>2</sup>
Feed constant	6 mm/U
Statistical fixed bearing load rating	1760 N
Reference service life	3000 km
Moving mass	153 g
Slide weight	153 g
Product weight	1200 g
Additional slide weight	153 g
Basic weight with 0 mm stroke	780 g
Additional weight per 10 mm stroke	42 g
Type of mounting	With internal thread and dowel pin
Material of end caps	Die-cast aluminum Coated
Profile material	High-alloy stainless steel
Note on materials	RoHS-compliant
Drive cover material	Die-cast aluminum Coated
Slide material	Steel
Spindle nut material	Steel
Spindle material	Steel