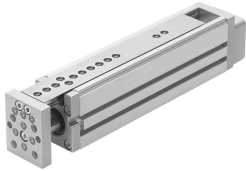


# Mini slide EGSL-BS-45-100-3P

Part number: 562225

FESTO



## Data sheet

Feature	Value
Working stroke	100 mm
Size	45
Run. parallelism along Z-axis	0.04 mm
Parallelism	0.05 mm
Reversing backlash	50 µm
Screw diameter	10 mm
Spindle pitch	3 mm/U
Mounting position	Any
Guide	Ball bearing cage guide
Structural design	Electrical mini-slide Guide with ball screw drive
Motor type	Stepper motor Servo motor
Spindle type	Ball screw drive
Position sensing	For proximity sensor
Max. acceleration	25 m/s <sup>2</sup>
Max. speed	0.3 m/s
Repetition accuracy	±0.015 mm
Duty cycle	100%
Corrosion resistance class (CRC)	0 - No corrosion stress
LABS (PWIS) conformity	VDMA24364 zone III
Noise level	60 dB(A)
Degree of protection	IP40
Ambient temperature	0 °C...60 °C
Continuous feed force	100 N
Max. driving torque	0.45 Nm
Max. force F <sub>y</sub>	631 N
Max. force F <sub>z</sub>	631 N
Max. torque M <sub>x</sub>	18.6 Nm
Max. torque M <sub>y</sub>	16.3 Nm
Max. torque M <sub>z</sub>	16.3 Nm

Feature	Value
Max. radial force on actuator shaft	120 N
Max. feed force Fx	150 N
No-load driving torque	0.09 Nm
Guide value for payload, horizontal	6 kg
Guide value for payload, vertical	6 kg
Mass moment of inertia JL per kg of payload	0.0023 kgcm <sup>2</sup>
Mass moment of inertia JO	0.0459 kgcm <sup>2</sup>
Feed constant	3 mm/U
Maintenance interval	Life-time lubrication
Moving mass	640 g
Product weight	1540 g
Type of mounting	With internal thread With centering sleeve With accessories
Note on materials	RoHS-compliant
Cover material	Cast aluminum Painted
Guide rail material	Roller bearing steel
Housing material	Wrought aluminum alloy Anodized
Material of yoke plate	Wrought aluminum alloy Anodized
Spindle nut material	Roller bearing steel
Spindle material	Roller bearing steel