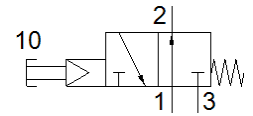
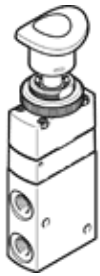


Push-button valve VHEM-PTC-M32U-M-G18

Part number: 558425

FESTO



Data sheet

| Feature | Value |
|---|---|
| Valve function | 3/2 open, monostable |
| Type of actuation | manual |
| Width | 20 mm |
| Standard nominal flow rate | 500 l/min |
| Working pressure | 4.5 ... 8 bar |
| Design structure | Poppet seat |
| Type of reset | mechanical spring |
| Nominal size | 4 mm |
| Instructions for use | Actuate only manually |
| Type of piloting | Piloted |
| Pilot air supply | Internal |
| Operating medium | Compressed air in accordance with ISO8573-1:2010 [7:::] |
| Note on operating and pilot medium | Lubricated operation possible (subsequently required for further operation) |
| Corrosion resistance classification CRC | 2 - Moderate corrosion stress |
| Medium temperature | -10 ... 60 °C |
| Ambient temperature | -10 ... 60 °C |
| Actuating force | 46 N |
| Product weight | 198 g |
| Mounting type | Optional Front panel installation with through hole |
| Pilot air port 12 | M5 |
| Pneumatic connection, port 1 | G1/8 |
| Pneumatic connection, port 2 | G1/8 |
| Pneumatic connection, port 3 | G1/8 |
| Materials note | Conforms to RoHS |
| Material seals | NBR |
| Material housing | Wrought Aluminum alloy Anodized |