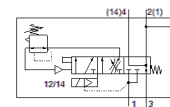
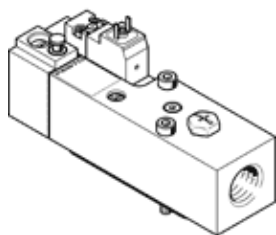


Pressure build-up valve VABF-S6-1-P5A4-N12-4-1

Part number: 558231

FESTO



Data sheet

Feature	Value
Max. positive test pulse with logic 0	2,500 µs
Max. negative test pulse with logic 1	1,400 µs
Vibration resistance	Transport application test at severity level 2 in accordance with FN 942017-4 and EN 60068-2-6
Shock resistance	Shock test with severity level 2 in accordance with FN 942017-5 and EN 60068-2-27
Based on the standard	ISO 5599-2
Type of actuation	electrical
Sealing principle	soft
Assembly position	Any
Manual override	detenting self-resetting via electrical control signal
Design structure	Piston slide
Type of reset	mechanical spring
Type of piloting	Piloted
Pilot air supply	Internal
Flow direction	non reversible
Valve function	Pressure build-up function
Note on forced dynamisation	Switching frequency min. 1/month
Operating pressure MPa	0.2 ... 1.2 MPa
Working pressure	2 ... 12 bar
Switchover pressure presetting	0.4 MPa
Standard nominal flow rate ventilation	3,000 l/min
Standard nominal flow rate venting	3,300 l/min
Nominal operating voltage DC	24 V
Characteristic coil data	24 V DC: 2.5 W
Permissible voltage fluctuation	+/- 10 %
Operating medium	Compressed air in accordance with ISO8573-1:2010 [7:4:4]
Note on operating and pilot medium	Lubricated operation possible (subsequently required for further operation)
Corrosion resistance classification CRC	0 - No corrosion stress
PWIS conformity	VDMA24364-B1/B2-L
Protection class	IP65 NEMA 4
Ambient temperature	-5 ... 50 °C
Product weight	590 g
Electrical connection	Plug pattern type C to EN 175301-803 Plug to EN 175301-803 Cubic design
Mounting type	On subbase
Auxiliary pilot air port 12/14	Sub-base size 1 to ISO 5599-2
Pneumatic connection, port 1	Sub-base size 1 to ISO 5599-2
Pneumatic connection, port 2	Sub-base size 1 to ISO 5599-2
Pneumatic connection, port 3	G1/2
Pneumatic connection, port 4	Sub-base size 1 to ISO 5599-2

Feature	Value
Materials note	Conforms to RoHS
Material seals	HNBR NBR
Material housing	Wrought Aluminum alloy
Material screws	Steel Galvanized