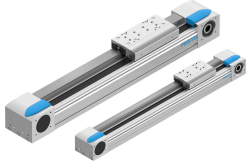


Belt driven linear actuator EGC-50- -TB-KF

Part number: 556812

FESTO



Data sheet

Feature	Value
Drive pinion effective diameter	18.46 mm
Working stroke	50 mm...1900 mm
Size	50
Toothed belt elongation	0.094 %
Toothed belt pitch	2 mm
Mounting position	Any
Guide	Recirculating ball bearing guide
Structural design	Electromechanical linear axis with toothed belt
Motor type	Stepper motor Servo motor
Max. acceleration	50 m/s ²
Max. speed	3 m/s
Repetition accuracy	±0.08 mm
Duty cycle	100%
CE marking (see declaration of conformity)	as per EU explosion protection directive (ATEX)
UKCA marking (see declaration of conformity)	acc. to UK EX instructions
Explosion protection certification outside the EU	EPL Db (GB) EPL Gb (GB)
Explosion prevention and protection	Zone 1 (ATEX) Zone 1 (UKEX) Zone 2 (ATEX) Zone 21 (UKEX)
ATEX category gas	II 2G
Type of ignition protection for gas	Ex h IIC T4 Gb
Explosive ambient temperature	-10°C ≤ Ta ≤ +60°C
LABS (PWIS) conformity	VDMA24364 zone III
Degree of protection	IP40
Ambient temperature	-10 °C...60 °C
2nd moment of area Ix	84000 mm ⁴
2nd moment of area Iy	114000 mm ⁴
Max. force Fy	650 N
Max. force Fz	650 N

Feature	Value
Max. no-load resistance to shifting	8 N
Max. torque Mx	3.5 Nm
Max. feed force Fx	50 N
Torsion moment of inertia It	42500 mm ⁴
Mass moment of inertia JH per meter of stroke	0.026 kgcm ²
Mass moment of inertia JL per kg of payload	0.85 kgcm ²
Feed constant	58 mm/U
Material of end caps	Wrought aluminum alloy Anodized
Profile material	Wrought aluminum alloy Anodized
Note on materials	RoHS-compliant
Drive cover material	Wrought aluminum alloy Anodized
Slide carriage material	Steel
Guide rail material	Steel
Belt pulley material	High-alloy stainless steel
Slide material	Wrought aluminum alloy Anodized
Toothed belt clamping component material	Nickel-plated
Toothed belt material	Polychloroprene with glass cord and nylon coating