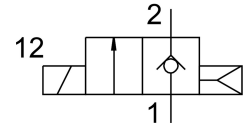
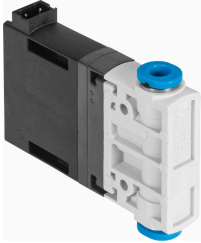


Air solenoid valve MHJ9-QS-4-MF

Part number: 553118

FESTO



Data sheet

Feature	Value
Valve function	2/2, closed, monostable
Actuation type	Electrical
Width	9 mm
Standard nominal flow rate	100 l/min
Pneumatic working port	QS-4
Operating voltage	24V DC
Operating pressure	0.05 MPa...0.6 MPa 0.5 bar...6 bar
Structural design	Poppet valve without return spring
Reset method	Pneumatic spring
Degree of protection	IP40
Width dimension	9.5 mm
Information on operation	Do not operate without flow. For block assembly with flow rate at max. ambient temperature 45 °C.
Sealing principle	Hard
Mounting position	Any
Manual override	None
Type of control	Direct
Flow direction	Non-reversible
b-value	0.38
C value	0.4 l/sbar
Max. switching frequency	1000 Hz
Switching time on at 4 bar and 24 V in new condition	0.8 ms
Switching time off at 4 bar and 24 V in new condition	0.4 ms
Switching time on at 4 bar and 48 V in new condition	0.6 ms
Switching time off at 4 bar and 48 V in new condition	0.4 ms
Switching time on at 4 bar and 12 V in new condition	1.1 ms
Switching time off at 4 bar and 12 V in new condition	0.4 ms
Switching time on at 0.5 bar and 24 V in new condition	0.7 ms
Switching time off at 0.5 bar and 24 V in new condition	0.5 ms
Switching time on at 6 bar and 24 V in new condition	0.9 ms
Switching time off at 6 bar and 24 V in new condition	0.4 ms

Feature	Value
Tolerance for switching time off	+15 %/-25 %
Tolerance for ON switching time	+/-15 %
DC operating voltage range	12 V...53 V
Duty cycle	100%
Note regarding operating voltage	Operation only with connecting cable MHJ9-KMH...
Coil resistance	2.5 Ohm
Operating medium	Compressed air as per ISO 8573-1:2010 [7:4:4]
Information on operating and pilot media	Operation with oil lubrication not possible
Restricted ambient and media temperature	Depending on the switching frequency (see diagram)
Corrosion resistance class (CRC)	2 - Moderate corrosion stress
LABS (PWIS) conformity	VDMA24364-B2-L
Storage temperature	-20 °C...50 °C
Permissible solenoid surface temperature	120 °C
Temperature of medium	-5 °C...60 °C
Ambient temperature	-5 °C...60 °C
Product weight	30 g
Electrical connection	2-pin KMH plug
Type of mounting	Optionally: Line installation With through-hole
Pneumatic connection 1	QS-4
Pneumatic connection 2	QS-4
Note on materials	RoHS-compliant
Seals material	HNBR
Housing material	PA-reinforced
Material of screws	Steel