

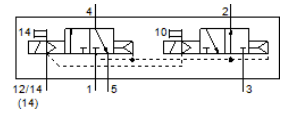
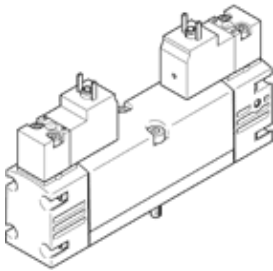
# Solenoid valve

## VSVA-B-T32H-AZH-A1-5C1

Part number: 547152

FESTO

With square plug, shape C



## Data sheet

| Feature                                  | Value  |
|--|--|
| Valve function                           | 2x3/2 open/closed, monostable  |
| Type of actuation                        | electrical   |
| Valve size                               | 26 mm  |
| Standard nominal flow rate               | 900 l/min  |
| Operating pressure MPa                   | 0.2 ... 1 MPa  |
| Working pressure                         | 2 ... 10 bar   |
| Design structure                         | Piston slide   |
| Type of reset                            | Air spring   |
| Protection class                         | IP65<br>NEMA 4   |
| Nominal size                             | 9 mm   |
| Exhaust-air function                     | throttleable   |
| Sealing principle                        | soft   |
| Assembly position                        | Any  |
| Conforms to standard                     | ISO 15407-1<br>VDMA 24563  |
| Manual override                          | Pushing  |
| Type of piloting                         | Piloted  |
| Pilot air supply                         | external   |
| Flow direction                           | non reversible   |
| Lap                                      | Positive overlap   |
| Signal status display                    | LED  |
| Pilot pressure MPa                       | 0.3 ... 1 MPa  |
| Pilot pressure                           | 3 ... 10 bar   |
| Flow rate of valve                       | 1,250 l/min  |
| Flow rate of valve on individual subbase | 1,000 l/min  |
| Flow rate of pneumatically linked valve  | 900 l/min  |
| Switching time off                       | 28 ms  |
| Switching time on                        | 20 ms  |
| Duty cycle                               | 100 %  |
| Characteristic coil data                 | 12 V DC: 1.8 W   |
| Permissible voltage fluctuation          | -15 % / +10 %  |
| Operating medium                         | Compressed air in accordance with ISO8573-1:2010 [7:4:4]                                       |
| Note on operating and pilot medium       | Lubricated operation possible (subsequently required for further operation)                    |
| Vibration resistance                     | Transport application test at severity level 2 in accordance with FN 942017-4 and EN 60068-2-6 |
| Shock resistance                         | Shock test with severity level 2 in accordance with FN 942017-5 and EN 60068-2-27              |
| Corrosion resistance classification CRC  | 0 - No corrosion stress  |
| PWIS conformity                          | VDMA24364-B1/B2-L  |
| Medium temperature                       | -5 ... 50 °C   |
| Relative air humidity                    | 0 - 90 %   |
| Sound pressure level                     | 85 dB(A)   |

| Feature                                | Value  |
|--|--|
| Pilot medium                           | Compressed air in accordance with ISO8573-1:2010 [7:4:4]                             |
| Ambient temperature                    | -5 ... 50 °C   |
| Max. tightening torque, valve mounting | 2 Nm   |
| Product weight                         | 305 g  |
| Electrical connection                  | Plug pattern type C to EN 175301-803<br>Per DIN EN 175301-803<br>Without mains earth |
| Mounting type                          | On subbase   |
| Auxiliary pilot air port 12            | Connection plate size 26 mm, according to ISO 15407-1                                |
| Auxiliary pilot air port 14            | Connection plate size 26 mm, according to ISO 15407-1                                |
| Pilot exhaust port 82/84               | Not ducted as per standard<br>Ducted   |
| Pneumatic connection, port 1           | Connection plate size 26 mm, according to ISO 15407-1                                |
| Pneumatic connection, port 2           | Connection plate size 26 mm, according to ISO 15407-1                                |
| Pneumatic connection, port 3           | Connection plate size 26 mm, according to ISO 15407-1                                |
| Pneumatic connection, port 4           | Connection plate size 26 mm, according to ISO 15407-1                                |
| Pneumatic connection, port 5           | Connection plate size 26 mm, according to ISO 15407-1                                |
| Pilot interface                        | According to ISO 15218   |
| Materials note                         | Conforms to RoHS   |
| Material seals                         | HNBR<br>NBR  |
| Material housing                       | Aluminum die cast  |
| Material screws                        | Steel<br>Galvanized  |