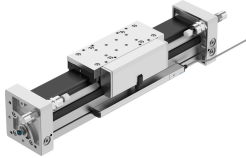


Linear actuator DGCI-63- -

Part number: 544429

FESTO



Data sheet

| Feature | Value |
|---|--|
| Stroke | 100 mm...2000 mm |
| Stroke, servopneumatic positioning | 100 mm...2000 mm |
| Soft Stop stroke | 100 mm...2000 mm |
| Stroke reduction in the end positions | 35 mm |
| Shortest positioning stroke | 3% of max. stroke Maximum 20 mm, however |
| Piston diameter | 63 mm |
| Cushioning | Pneumatic shock absorber, hard characteristic curve Pneumatic shock absorber, soft characteristic curve |
| Mounting position | Any |
| Guide | Recirculating ball bearing guide |
| Position sensing | With linear potentiometer attached |
| Variants | Additional slide, standard, on left Additional slide, standard on right |
| Operating pressure | 0.15 MPa...0.8 MPa 1.5 bar...8 bar 21.75 psi...116 psi |
| Mode of operation | Double-acting |
| Certification | RCM compliance mark |
| CE marking (see declaration of conformity) | As per EU EMC directive as per EU explosion protection directive (ATEX) As per EU RoHS directive |
| UKCA marking (see declaration of conformity) | To UK instructions for EMC acc. to UK EX instructions To UK RoHS instructions |
| Explosion protection certification outside the EU | EPL Dc (GB) EPL Gc (GB) |
| Explosion prevention and protection | Zone 2 (ATEX) Zone 2 (UKEX) Zone 22 (ATEX) Zone 22 (UKEX) |
| ATEX category gas | II 3G |
| ATEX category for dust | II 3D |
| Type of ignition protection for gas | Ex ec IIC T4 Gc X |
| Type of (ignition) protection for dust | Ex tc IIIC T120°C Dc X |

| Feature | Value |
|--|---|
| Explosive ambient temperature | 0°C ≤ Ta ≤ +50°C |
| Operating medium | Compressed air as per ISO 8573-1:2010 [6:4:4] |
| Information on operating and pilot media | Operation with oil lubrication not possible |
| Corrosion resistance class (CRC) | 1 - Low corrosion stress 2 - Moderate corrosion stress |
| LABS (PWIS) conformity | VDMA24364-B1/B2-L |
| For use in the food industry | See supplementary material information |
| Ambient temperature | -10 °C...60 °C |
| Theoretical force at 6 bar, retracting | 1870 N |
| Theoretical force at 6 bar, advancing | 1870 N |
| Alternative connections | See product drawing |
| Type of mounting | With accessories |
| Pneumatic connection | G3/8 |
| Cover material | Wrought aluminum alloy |
| Seals material | NBR TPE-U(PU) |