

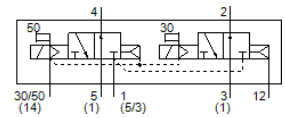
Solenoid valve

VSVA-B-T32F-AZD-D1-1T1L

Part number: 543693

FESTO

For valve manifold VTSA.



Data sheet

| Feature | Value |
|--|--|
| Valve function | 2x3/2 open, monostable |
| Type of actuation | electrical |
| Width | 42 mm |
| Standard nominal flow rate | 1,200 l/min |
| Operating pressure MPa | -0.09 ... 1 MPa |
| Working pressure | -0.9 ... 10 bar |
| Design structure | Piston slide |
| Authorization | c UL us - Recognized (OL) |
| Protection class | IP65 NEMA 4 |
| Exhaust-air function | throttleable Via throttle plate Via individual sub-base |
| Sealing principle | soft |
| Assembly position | Any |
| Manual override | detenting Pushing Covered |
| Type of piloting | Piloted |
| Pilot air supply | external |
| Flow direction | reversible only |
| Signal status display | LED |
| Pilot pressure MPa | 0.3 ... 1 MPa |
| Pilot pressure | 3 ... 10 bar |
| Flow rate of valve | 1,400 l/min |
| Flow rate of valve on individual subbase | 1,200 l/min |
| Optimized flow rate of valve pneumatically concatenated flow | 1,300 l/min |
| Flow rate of pneumatically linked valve | 1,200 l/min |
| Switching time off | 28 ms |
| Switching time on | 34 ms |
| Max. positive test pulse with logic 0 | 1,600 µs |
| Max. negative test pulse with logic 1 | 1,100 µs |
| Nominal breakaway current per solenoid coil | 60 mA up to 30 ms |
| Characteristic coil data | 24 V DC: 1.3 W |
| Surge strength | 2.5 kV |
| Degree of contamination | 3 |
| Permissible voltage fluctuation | +/- 10 % |
| Operating medium | Compressed air in accordance with ISO8573-1:2010 [7:4:4] |
| Note on operating and pilot medium | Lubricated operation possible (subsequently required for further operation) |
| Vibration resistance | Transport application test at severity level 2 in accordance with FN 942017-4 and EN 60068-2-6 |
| Shock resistance | Shock test with severity level 2 in accordance with FN 942017-5 and EN 60068-2-27 |

| Feature | Value |
|---|--|
| Corrosion resistance classification CRC | 0 - No corrosion stress |
| PWIS conformity | VDMA24364-B1/B2-L |
| Relative air humidity | 0 - 90 % |
| Ambient temperature | -5 ... 50 °C |
| Product weight | 442 g |
| Electrical connection | Plug-in as per ISO 5599-2 |
| Mounting type | On subbase |
| Auxiliary pilot air port 12/14 | Sub-base size 1 to ISO 5599-2 |
| Pilot exhaust port 82/84 | Optional Not ducted as per standard Ducted |
| Pneumatic connection, port 1 | Sub-base size 1 to ISO 5599-2 |
| Pneumatic connection, port 2 | Sub-base size 1 to ISO 5599-2 |
| Pneumatic connection, port 3 | Sub-base size 1 to ISO 5599-2 |
| Pneumatic connection, port 4 | Sub-base size 1 to ISO 5599-2 |
| Pneumatic connection, port 5 | Sub-base size 1 to ISO 5599-2 |
| Materials note | Conforms to RoHS |
| Material seals | FPM HNBR NBR |
| Material housing | Aluminum die cast PA |
| Material screws | Galvanized steel |