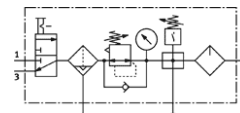
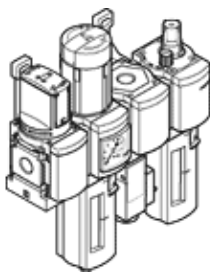


Service unit combination MSB4-1/4:C3J2F3M1-WP

Part number: 542301

FESTO

Comprising manual on-off valve, filter regulator, branching module with pressure switch without display, lubricator, wall mounting plate.
Maximum output pressure 12 bar, 40 µm filter, with pressure gauge, lockable regulator head, plastic bowl with plastic bowl guard, fully automatic condensate drain, flow direction from left to right.



Data sheet

| Feature | Value |
|---|--|
| Size | 4 |
| Series | MS |
| Actuator lock | Rotary knob with lock with accessories, lockable |
| Assembly position | Vertical +/- 5° |
| Grade of filtration | 40 µm |
| Condensate drain | fully automatic |
| Design structure | Branching module On/off valve Filter regulator with pressure gauge Standard oil-mist lubricator |
| Controller function | Output pressure constant with initial pressure compensation with secondary exhaust with return flow |
| Bowl guard | Plastic guard |
| Pressure gauge | with pressure gauge |
| Working pressure | 2 ... 12 bar |
| Pressure control range | 1 ... 12 bar |
| Standard nominal flow rate | 950 l/min |
| Operating medium | Compressed air in accordance with ISO8573-1:2010 [7:4:4] Inert gases |
| Note on operating and pilot medium | Lubricated operation possible (subsequently required for further operation) |
| Corrosion resistance classification CRC | 2 |
| Storage temperature | -10 ... 60 °C |
| Air purity class at output | Compressed air in accordance with ISO8573-1:2010 [7:4:-] |
| Medium temperature | 5 ... 60 °C |
| Ambient temperature | 5 ... 60 °C |
| Product weight | 1,700 g |
| Mounting type | with accessories |
| Pneumatic connection, port 1 | G1/4 |
| Pneumatic connection, port 2 | G1/4 |
| Pneumatic connection, port 3 | G1/4 |
| Materials information, housing | Aluminum die cast |
| Materials information for bowl | PC |