

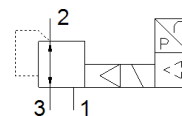
Proportional pressure regulator

VPPM-6L-L-1-N18-0L6H-V1N

Part number: 542212

FESTO

with electric set point specification and two-stage control circuit for stable, precise characteristic of regulation.



Data sheet

Feature	Value
Nominal diameter, pressurization	6 mm
Nominal diameter, exhaust	4.5 mm
Type of actuation	electrical
Sealing principle	soft
Assembly position	Any
Design structure	Pilot actuated diaphragm regulator
Short circuit strength	for all electrical connections
Safety instructions	VPPM safety position: If the power supply cable is interrupted, output pressure is maintained unregulated.
Polarity protected	for all electrical connections
Type of reset	mechanical spring
Type of piloting	Piloted
Valve function	3-way proportional-pressure regulator
Type of display	LED
Pressure regulation range MPa	0.006 ... 0.6 MPa
Pressure regulation range	0.06 ... 6 bar
Inlet pressure 1	0 ... 8 bar
Supply pressure 1 MPa	0 ... 0.8 MPa
Max. pressure hysteresis	0.03 bar
Standard nominal flow rate	900 l/min
Operating voltage range DC	21.6 ... 26.4 V
Max. current consumption	300 mA
Duty cycle	100 %
Max. electrical power consumption	7 W
Residual ripple	10 %
Switch output	NPN
Signal range, analog output	0 - 10 V
Signal range, analog input	0 - 10 V
Operating medium	Compressed air in accordance with ISO8573-1:2010 [7:4:4] Inert gases
Note on operating and pilot medium	Lubricated operation not possible
Authorization	RCM Mark c UL us - Listed (OL)
KC mark	KC-EMV
CE symbol (see declaration of conformity)	according to EU-EMV guideline in accordance with EU RoHS directive
UKCA marking (see declaration of conformity)	To UK instructions for EMC To UK RoHS instructions
Certificate issuing department	UL E322346
Corrosion resistance classification CRC	2 - Moderate corrosion stress
PWIS conformity	VDMA24364-B1/B2-L
Medium temperature	10 ... 50 °C
Protection class	IP65

Feature	Value
Ambient temperature	0 ... 60 °C
Product weight	400 g
Linearity	1 %FS
Hysteresis	0.5 %FS
Reproducibility	0.5 %FS
Overall accuracy	1,25 %FS
Temperature coefficient	0.04 %/K
FS repetition accuracy	0.5 %
Electrical connection	8-pin M12 Plug
Mounting type	with through hole with accessories Optional
Pneumatic connection, port 1	1/8 NPT
Pneumatic connection, port 2	1/8 NPT
Pneumatic connection, port 3	1/8 NPT
Materials note	Conforms to RoHS
Material housing	Wrought Aluminum alloy