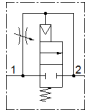
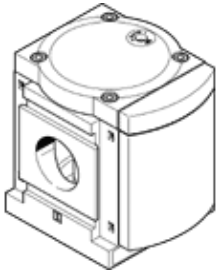


Pressure build-up valve MS12-DL-G

Part number: 541497

FESTO

To slowly pressurize and exhaust pneumatic equipment



Data sheet

Feature	Value
Exhaust-air function	throttleable
Type of actuation	pneumatic
Assembly position	Any
Manual override	None
Design structure	Piston seat
Type of reset	mechanical spring
Type of piloting	direct
Pilot air supply	Internal
Flow direction	non reversible
Valve function	2/2
Working pressure	2 ... 20 bar
Standard nominal flow rate	25,000 ... 42,000 l/min
Operating medium	Compressed air in accordance with ISO8573-1:2010 [7:-:-]
Corrosion resistance classification CRC	2 - Moderate corrosion stress
PWIS conformity	VDMA24364-B1/B2-L
Medium temperature	-10 ... 60 °C
Ambient temperature	-10 ... 60 °C
Product weight	3,600 g
Mounting type	Line installation with accessories Optional
Pneumatic connection, port 1	Manifold module
Pneumatic connection, port 2	Manifold module
Material seals	NBR
Material housing	Aluminum die cast