

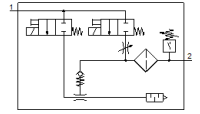
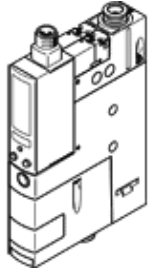
Vacuum generator

OVEM-10-H-BN-QO-CE-N-2P

Part number: 539991

FESTO

Supply/vacuum port with QS inch fittings, exhaust port with open silencer.



Data sheet

Feature	Value
Nominal size, Laval nozzle	0.95 mm
Grid dimension	20 mm
Design, silencer	open
Assembly position	Any
Ejector characteristic	High vacuum Standard
Grade of filtration	40 µm
Manual override	Pushing Additionally via operating buttons
Integrated function	Ejector pulse valve, electrical Flow control valve Electrical on-off valve Filter Air-saving circuit, electrical Non-return valve Open silencer Vacuum switch
Design structure	modular
Short circuit strength	Yes
Measured variable	Relative pressure
Measuring principle	Piezoresistive
Switching element function	Normally closed contact Normally open contact
Switching function	Window comparator Threshold value comparator
Valve function	closed
Polarity protected	for all electrical connections
Standard switching input	IEC 61131-2
Type of display	4-place alphanumeric Backlit LCD
Indicating range	-29.5 ... 0 inchHg
Unit(s) that can be displayed	inchHg
Threshold setting range	-0.999 ... 0 bar
Hysteresis adjustment range [bar]	-0.9 ... 0 bar
Setting options	Via display and buttons
Switching position indicator	LCD
Operating status display	Optical
Working pressure	2 ... 8 bar
Working pressure for max. vacuum	3.5 bar
Max. vacuum	93 %
Nominal working pressure	6 bar
Max. suction rate with respect to atmosphere	19.5 l/min
Air supply time at nominal working pressure	0.2 s
Operating voltage range DC	20.4 ... 27.6 V

Feature	Value
Duty cycle	100%
Inductive protective circuit	Adapted to MZ-, MY-, ME coils
Insulation voltage	50 V
Idle current	< 70 mA
Max. output current	100 mA
Residual current	0.1 mA
Switch output	2xPNP
Voltage drop	≤ 1.5 V
Characteristic coil data	24 V DC: low-current phase 0.3 W, high-current phase 2.55 W
Surge strength	0.8 kV
Overload withstand capability	Available
Degree of contamination	3
Operating medium	Compressed air in accordance with ISO8573-1:2010 [7:4:4]
Note on operating and pilot medium	Lubricated operation not possible
CE symbol (see declaration of conformity)	according to EU-EMV guideline
Corrosion resistance classification CRC	2
Medium temperature	0 ... 50 °C
Relative air humidity	5 - 85 %
Noise level at nominal operating pressure	73 dB(A)
Protection class	IP65
Safety class	III
Ambient temperature	0 ... 50 °C
Authorization	RCM Mark c UL us - Listed (OL)
Max. tightening torque	0.8 Nm with female thread 2.5 Nm with clearance hole
Product weight	331 g
Pressure measuring range	-1 ... 0 bar
Accuracy, FS	3 %FS
Switching point reproducibility, FS	0.6 %
Input circuit logic	PNP (positive-switching)
Electrical connection	Plug M12x1 5-pin
Mounting type	with through hole with internal (female) thread with accessories
Pneumatic connection, port 1	QS-5/16
Pneumatic connection, port 3	Integrated silencer
Vacuum connection	QS-5/16
Materials note	Contains PWIS substances Conforms to RoHS
Materials information for seals	NBR
Material information, collector nozzle	POM
Materials information for filter	Mesh PA Sintered steel
Material information, filter housing	PA-reinforced
Materials information, housing	Aluminum die cast PA-reinforced
Regulating screw material data	Steel
Material information, silencer	Wrought Aluminum alloy PU foam
Screw material data	Steel
Materials info, viewing window	PA
Material information, plug housing	Brass Nickel plated
Material information for crimp connectors	Brass Gold plated
Material information, pins	Steel
Material information, jet nozzle	Wrought Aluminum alloy

Feature	Value
Material information, keypad	TPE-U
Materials information for fitting	Nickel-plated brass