

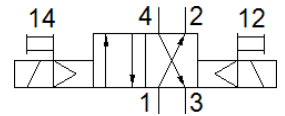
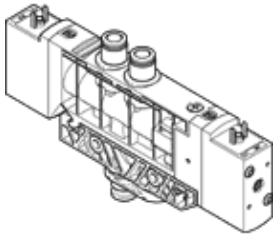
Solenoid valve

VUVB-L-B42-D-Q6-1C1

Part number: 537474

FESTO

With solenoid coil and manual override, without socket.



Data sheet

| Feature | Value |
|---|---|
| Valve function | 4/2 bistable |
| Type of actuation | electrical |
| Valve size | 20 mm |
| Standard nominal flow rate | 500 l/min |
| Working pressure | 2 ... 8 bar |
| Design structure | Piston slide |
| Protection class | IP65 |
| Nominal size | 7 mm |
| Exhaust-air function | not throttleable |
| Sealing principle | soft |
| Assembly position | Any |
| Manual override | detenting Pushing |
| Type of piloting | Piloted |
| Pilot air supply | Internal |
| Flow direction | non reversible |
| Pilot pressure | 2 ... 8 bar |
| Switching time reversal | 20 ms |
| Characteristic coil data | 24 V DC: 1.5 W |
| Surge strength | 0.8 kV |
| Degree of contamination | 3 |
| Permissible voltage fluctuation | +/- 10 % |
| Operating medium | Compressed air in accordance with ISO8573-1:2010 [7:4:4] |
| Note on operating and pilot medium | Lubricated operation possible (subsequently required for further operation) |
| Corrosion resistance classification CRC | 1 |
| Storage temperature | -20 ... 40 °C |
| Medium temperature | -5 ... 50 °C |
| Ambient temperature | -5 ... 50 °C |
| Max. tightening torque, valve mounting | 2 Nm |
| Max. tightening torque, wall mounting | 3 Nm |
| Product weight | 240 g |
| Electrical connection | Plug to EN 175301-803 Design C |
| Mounting type | with through hole |
| Auxiliary pilot air port 12/14 | Subbase |
| Pilot exhaust port 84 | Non-ducted |
| Pneumatic connection, port 1 | QS-6 |
| Pneumatic connection, port 2 | QS-6 |
| Pneumatic connection, port 3 | G1/4 |
| Pneumatic connection, port 4 | QS-6 |
| Materials note | Free of copper and PTFE Conforms to RoHS |

| Feature | Value |
|------------------------------------|------------------------|
| Materials information for subbase | PA-reinforced |
| Materials information for seals | FPM HNBR NBR |
| Materials information, housing | PA-reinforced |
| Material information, piston spool | Wrought Aluminum alloy |